

Bio3 Implants



CONTENT

Premium Tapered Implants Range

- 04** Bio3 Implants Company
- 08** Progressive Implant
- 14** Advanced Implant
- 22** Healing Caps
- 24** Cover Screw Healing Caps
- 25** Straight Anatomic Abutment
- 26** Straight Abutment
- 27** Angulated Anatomic Abutment 15°
- 28** Angulated Anatomic Abutment 25°
- 29** Screw Retained Abutments
- 31** Angulated Multi-Unit 17°
- 32** Angulated Multi-Unit 30°
- 36** Ball Attachments
- 37** Locators
- 38** Titanium Basis with a Burned-out Plastic Sleeve
- 40** Prosthetics for CAD/CAM
- 43** Burned-out Abutment
- 44** Laboratory Analog, Transfer for Bio LINE, Plastic transfer-cap
- 45** Impression Removal Transfers
- 48** Bio Line Healing Caps
- 52** Bio Line Straight Abutments
- 56** Bio Line Angulated Abutments
- 60** Bio3 Surgical Kit
- 62** Bio3 Guide Surgical Kit
- 66** Instruments, Implant Drivers, Adapters
- 67** Wrenches and Stoppers, Surgical Tapered Drills
- 68** Bone Taps
- 70** Material for bone regeneration Bio3 BONE
- 71** Bio3 PENGUIN
- 74** Bio3 VITAMIN COMPLEX
- 75** Bio3 IMPLANT CARE FOAM

NEW PRODUCTS

**NEW
SURGICAL KIT**
with stoppers for all
drills will be available
2021



**Bio3 PENGUIN
MONITOR
OSSEOINTEGRATION**

see page 71



Bio3 VITAMIN

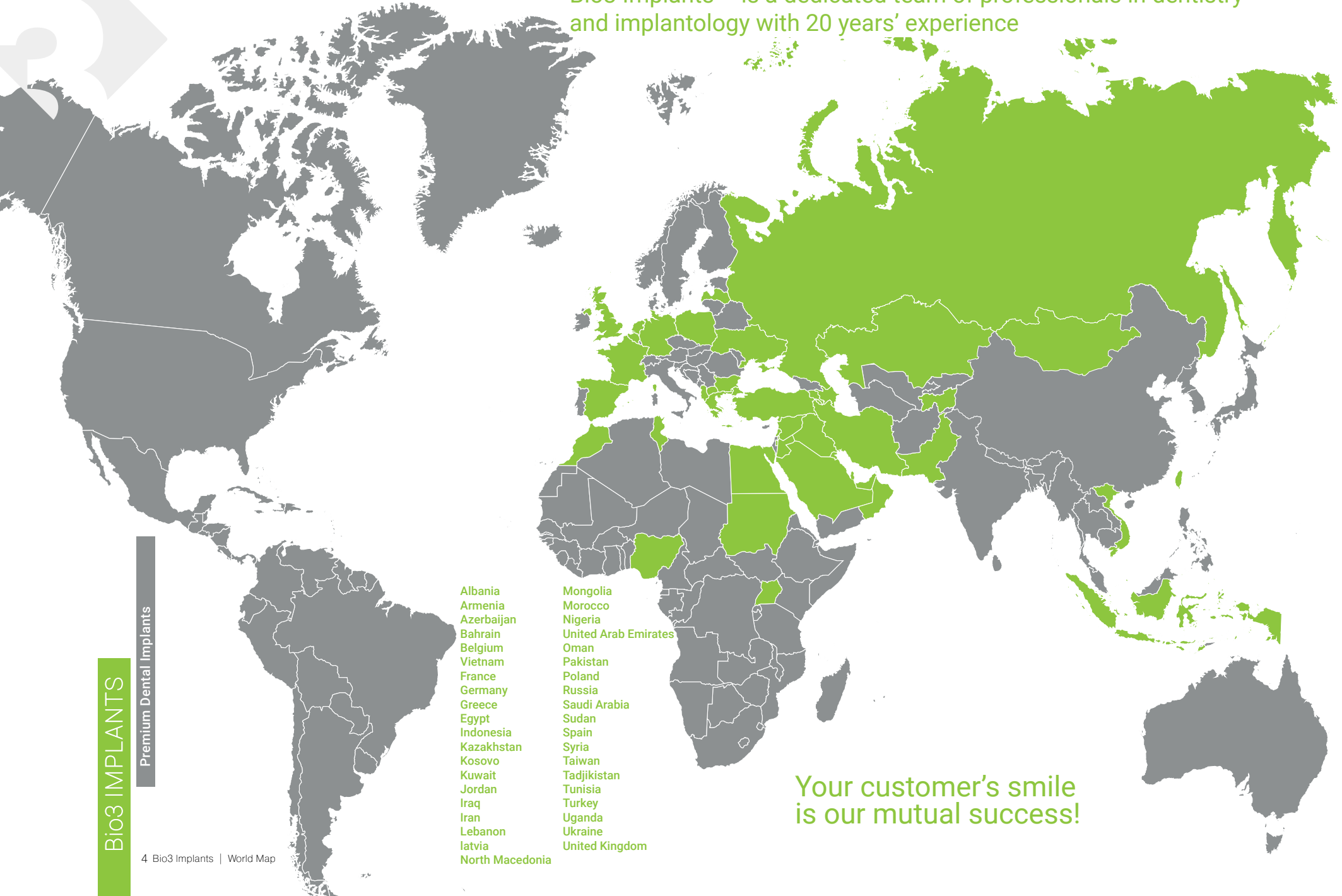
see page 74



**Bio3 IMPLANT
CARE FOAM**

see page 75

Bio3 Implants – is a dedicated team of professionals in dentistry and implantology with 20 years' experience



Bio3 IMPLANTS

Premium Dental Implants

Albania
Armenia
Azerbaijan
Bahrain
Belgium
Vietnam
France
Germany
Greece
Egypt
Indonesia
Kazakhstan
Kosovo
Kuwait
Jordan
Iraq
Iran
Lebanon
Latvia
North Macedonia
Mongolia
Morocco
Nigeria
United Arab Emirates
Oman
Pakistan
Poland
Russia
Saudi Arabia
Sudan
Spain
Syria
Taiwan
Tajikistan
Tunisia
Turkey
Uganda
Ukraine
United Kingdom

Your customer's smile
is our mutual success!

Bio3 IMPLANTS COMPANY

Premium Tapered Implants Range

Bio3 IMPLANTS

Bio3 Implants is the synergy of the best achievements of the German dentistry school and innovative global developments.

Bio3 Implants GmbH is a German company, which offers the dentists the best solutions of the highest quality and accuracy in implantology. We develop, produce and implement reliable and quality implant systems of premium line with conical connection.

Bio3 Implants team tends to make implantation simple, easy, high-quality and highly gentle for the patient. To achieve this goal the company develops innovative premium quality products as well as provides its customers with a high standard service.

Bio3 Implants main benefits:

- Precision conical connection
- Anodized hydrophilic surface
- Customers support 24/7
- Life-time warranty

Reliability and quality

Bio3 Implants conducts continuous and systematic quality control of all products which is confirmed by international quality standards ISO 13485:2016, **CE**₂₇₉₇.

During the past years the company extended its production with the most advanced high-tech equipment. Technological cycle of Bio3 Implants production is ensured by high standards of German quality.

All products go through several stages of quality control.

Identification and warranty

Each Bio3 Implants product is assigned with a unique serial number that allows tracking the history of the product manufacturing from the first to the final stage. Bio3 Implants provides a lifetime warranty on all its products. Each implant includes Warranty Card, Product certificate and manual for the patient.

Compactness and availability

We offer a simple and reliable solution for all possible clinical situations. The doctor uses only one surgical kit to perform operations on all implant types. Bio3 implant system has 2 platforms for implants with conical connection.

Service and Training

The company pays big attention to the service support to our clients in all countries of the world. Bio3 Implants organizes specialized lectures, specialized educational courses and programs, as well as workshops and seminars for implantologists, prosthodontists and dental technicians in different countries.

Our mission is to help our clients every day by offering them reliability, aesthetics and patient's beautiful smile.

Your customer's smile is our mutual success! We speak the same language with you!



Special proposal

Instruments

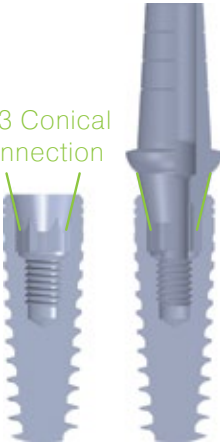
Kits

Suprastructures

Implants

Bio3 Implants Company

Bio3 Conical Connection



Bio3 tapered implant system provides an ideal tight connection between the implant and abutment

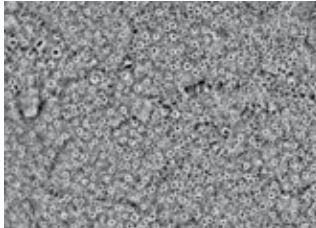
Researches show that anodized surface stimulates bone tissue growth throughout entire implant surface, which provides high mechanical stability and osseointegration in much shorter terms.

These unique properties of the surface allow performing orthopedic rehabilitation at an earlier stage as well as significantly reduce the risk within implant installation under one-stage protocol.

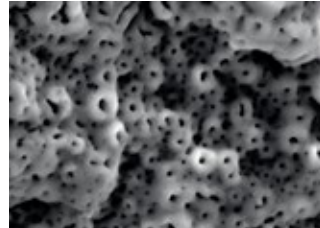
Bio3 Implants surface is a modern generation of surfaces in dental implantology.

Bio3 IMPLANTS SURFACE

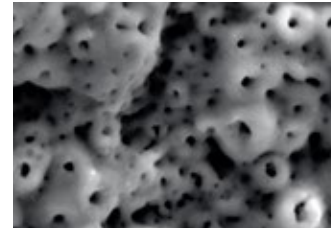
1800 magnification



3000 magnification



5000 magnification



Hydrophilic microporous structure of Bio3 Implants surface stimulates active bone tissue growth throughout entire implant surface.

Bio3 hydrophilic anodized implant surface

Bio3 Implants surface is active and hydrophilic, with a distinct multilayered microporous structure. The thickness of the implant surface oxide layer reaches 10-15 microns.

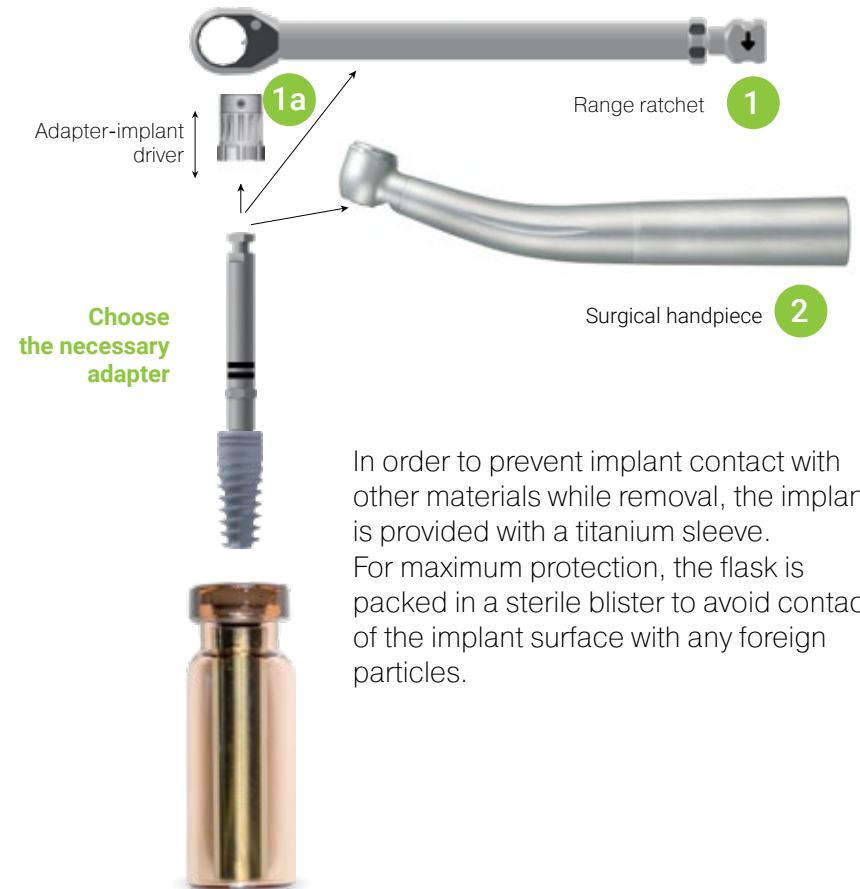
Micropores grow through the entire thickness of the oxide layer. When combining, they create a multilayered surface. This allows bone tissue not only to grow deeply into the micropores, but also to grow between them. Thus the implant surface area is significantly increased.

Respectively, the contact between bone tissue and implant surface is strengthened.

Titanium oxide film is enriched with calcium hydroxyapatite.

MANUAL SURGICAL GUIDE

Extraction of the implant from a titanium sleeve





**Bio3 IMPLANT
PROGRESSIVE**



Bio3 IMPLANT PROGRESSIVE

Tapered dental implants range

CONICAL CONNECTION

Conical connection with inner hex provides precision implant-abutment connection and therefore, influences well on the stability process of permanent dental prostheses. 12° taper provides this connection with perfect fitting and tightness.

Conical connection is absolutely bacterial dense and shows excellent results in compression reduction in implant cervical part.

CHARACTERISTICS

- Spiral-shaped implant with aggressive thread was developed for a better primary stability, therefore it is recommended to be used in II, III and IV bone tissue types.
- Conical implant body perfectly complies with the drill shape for more precision bone fitting.
- Implant body tapering ensures better self-tapping property. Noninvasive apical implant part prevents from anatomical damaging during sinus lifting
- Platform switching

SURFACE

Bio3 Implants surface is the latest generation of dental implant surfaces. It is active and hydrophilic. The increased surface area provides perfect bone-implant connection. Due to this advantage the implant has higher primary stability and quick osseointegration. It can be used with one- or two-stage protocol.

APICAL PART

Due to the precise design of implant apical part it can prevent from damage of anatomical bone structure and can give the opportunity to the implantologist to decrease the time of surgical implantation stage. Progressive Implant enables to solve any clinical problems even in highly complicated situations.



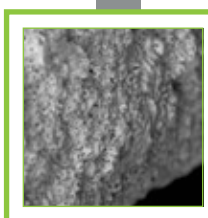
CONICAL CONNECTION



THREAD



GEOMETRY



Bio3 IMPLANTS SURFACE



APICAL PART

Special proposal

Instruments

Kits

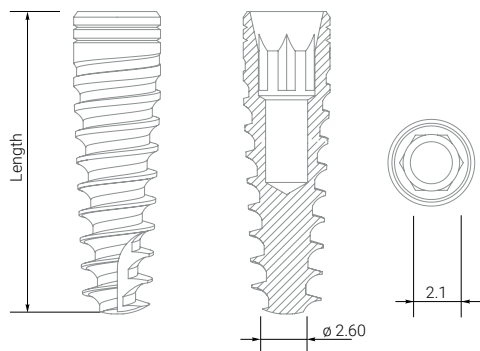
Suprastructures

Implants

Bio3 Implants Company

Bio3 IMPLANT PROGRESSIVE

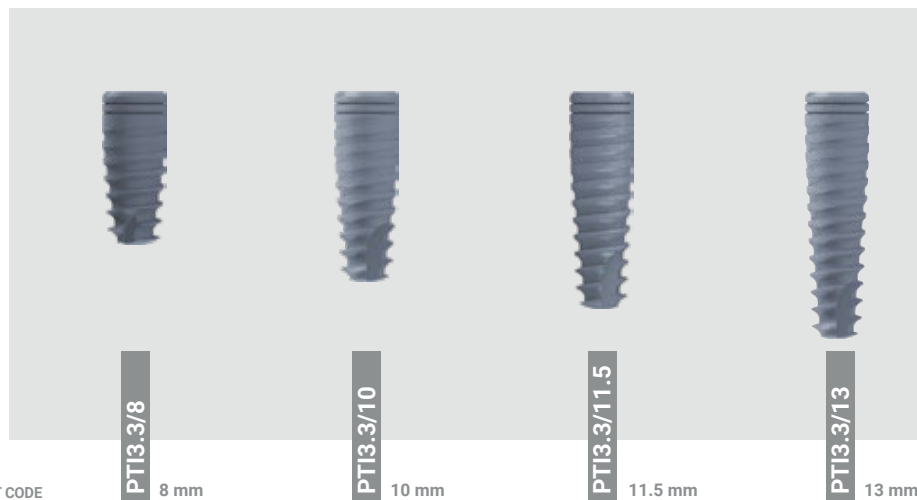
Standard platform



ATTENTION!

It is used for installation in front and lateral parts (canines, incisors, premolars).

PRODUCT CODE



DIAMETER

3.3

INTERNAL HEX

2.1

**STANDARD
PLATFORM**

TITANIUM COVER SCREW 2.1



is included in each implant set

*It is possible to order implants with SLA surface. Add «+SLA» to the relevant article in your order.

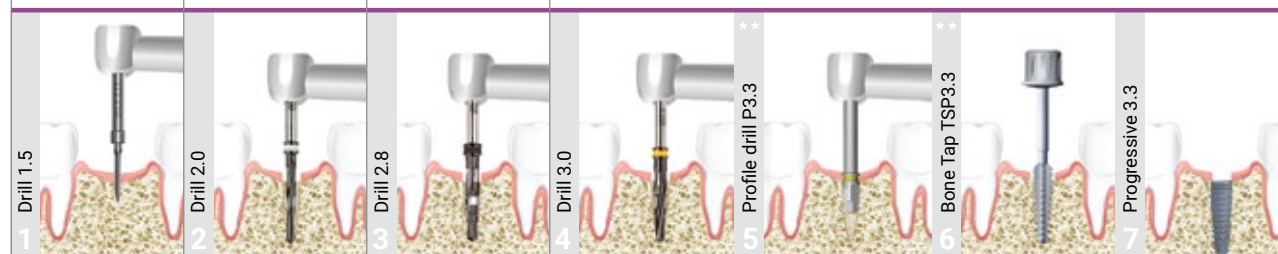
PROGRESSIVE IMPLANT

Progressive Implant is the newest development. Being self-tapping it provides perfect fixation and primary stability.

Spiral-shaped implant form with various thread depth is developed for better bone compression while using in III-IV bone types.

RECOMMENDED DRILLING SPEED

D1	800-1200	D1	800-1000	D1	600-800	D1	500-700
D2	800-1200	D2	800-1000	D2	600-800	D2	600-800
D3	800-1000	D3	700-900	D3	500-600	D3	500-600
D4	800-1000	D4	600-800	D4	400-500	D4	400-500



Implantation Protocol.*

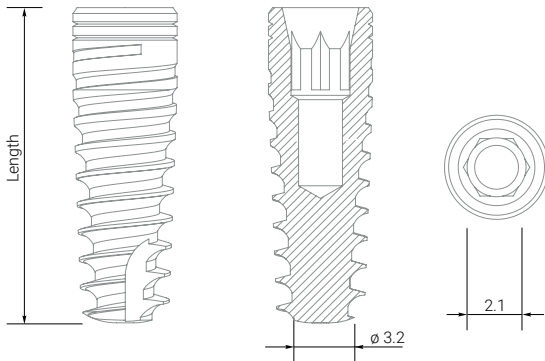
* The Protocol does not replace an appropriate training.

** It is used in I and II bone types.

Our drill 2.8 change color and go from red to black. During the transition period, we will deliver the red and black products to you, up to complete modification of the range.

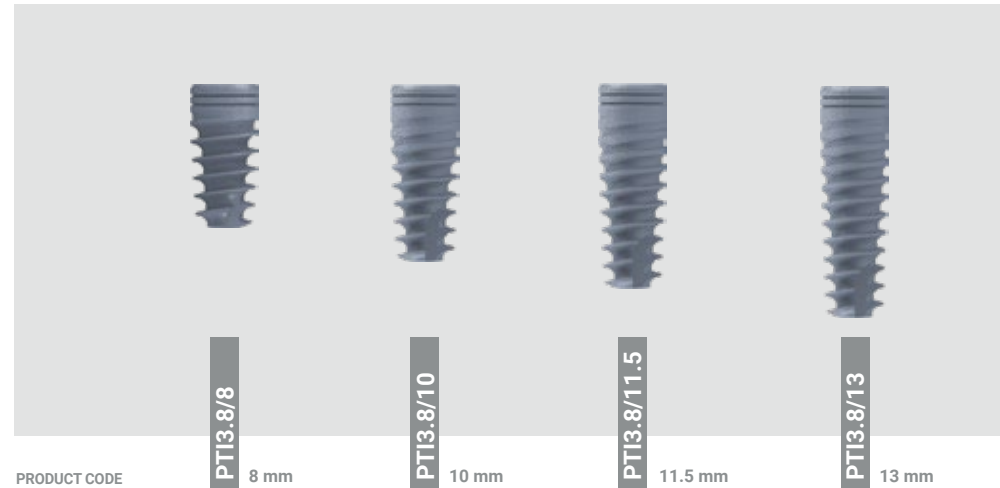
Bio3 IMPLANT PROGRESSIVE

Standard platform



ATTENTION!

It is used for installation in front and lateral parts (canines, incisors, premolars).



**STANDARD
PLATFORM**

DIAMETER
3.8
INTERNAL HEX
2.1

TITANIUM COVER SCREW 2.1

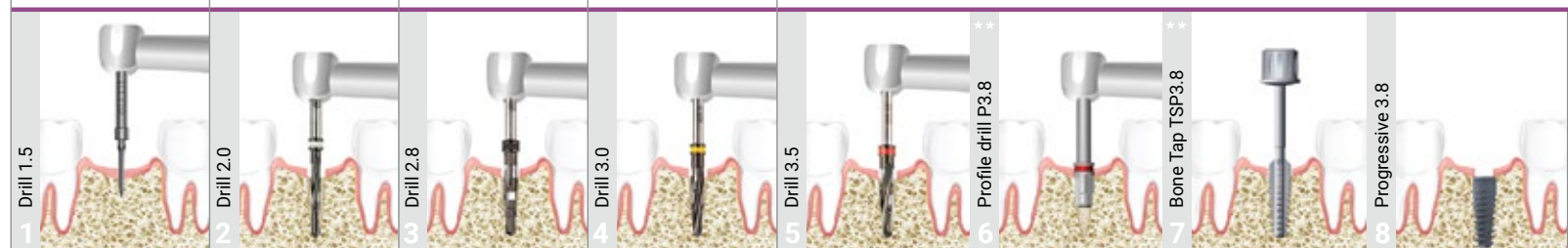


is included in each implant set

*It is possible to order implants with SLA surface. Add «+SLA» to the relevant article in your order.

RECOMMENDED DRILLING SPEED

D1 800-1200	D1 800-1000	D1 600-800	D1 500-700	D1 500-700
D2 800-1200	D2 800-1000	D2 600-800	D2 600-800	D2 600-800
D3 800-1000	D3 700-900	D3 500-600	D3 500-600	D3 500-600
D4 800-1000	D4 600-800	D4 400-500	D4 400-500	D4 400-500



Implantation Protocol.*

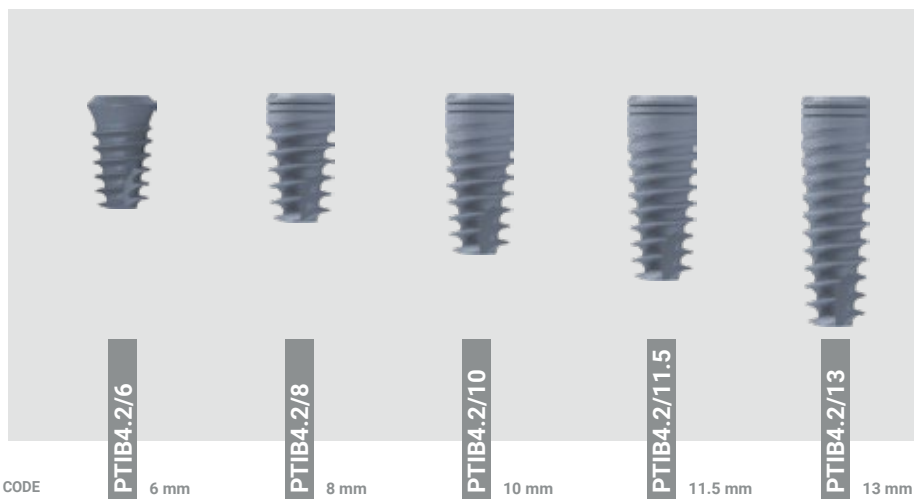
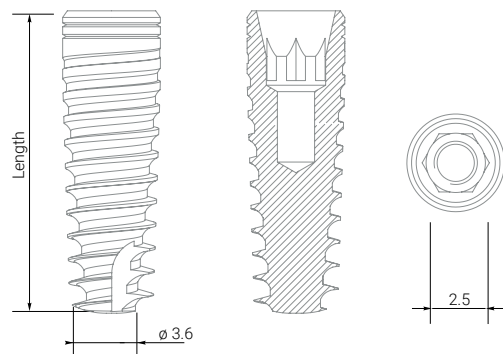
* The Protocol does not replace an appropriate training.

** It is used in I and II bone types.

Our drill 2.8 change color and go from red to black. During the transition period, we will deliver the red and black products to you, up to complete modification of the range.

Bio3 IMPLANT PROGRESSIVE

Wide platform



DIAMETER
4.2
INTERNAL HEX
2.5

**WIDE
PLATFORM**

TITANIUM COVER SCREW 2.5

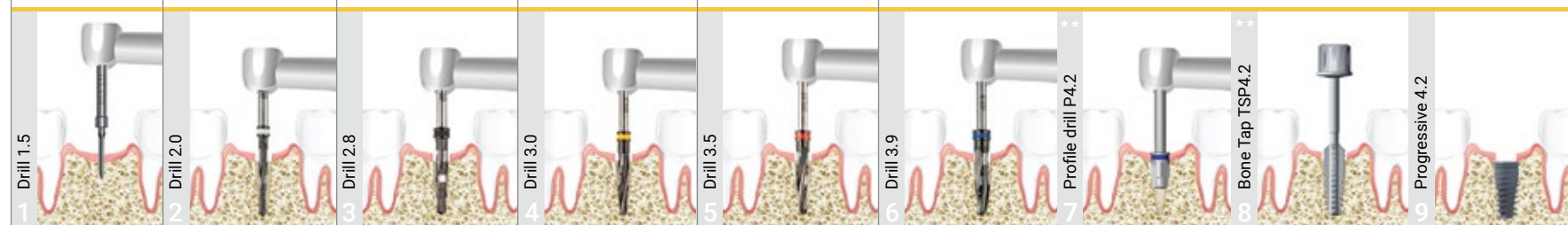


is included in each
implant set

*It is possible to order implants with SLA surface. Add «+SLA» to the relevant article in your order.

RECOMMENDED DRILLING SPEED

D1	800-1200	D1	800-1000	D1	600-800	D1	500-700	D1	500-700	D1	400-600
D2	800-1200	D2	800-1000	D2	600-800	D2	600-800	D2	600-800	D2	500-700
D3	800-1000	D3	700-900	D3	500-600	D3	500-600	D3	500-600	D3	500-600
D4	800-1000	D4	600-800	D4	400-500	D4	400-500	D4	400-500	D4	400-500



Implantation Protocol.*

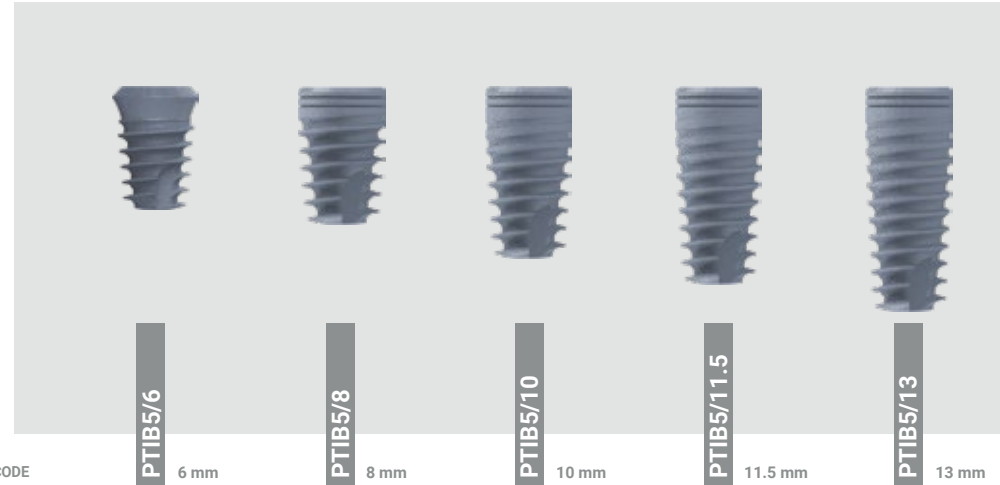
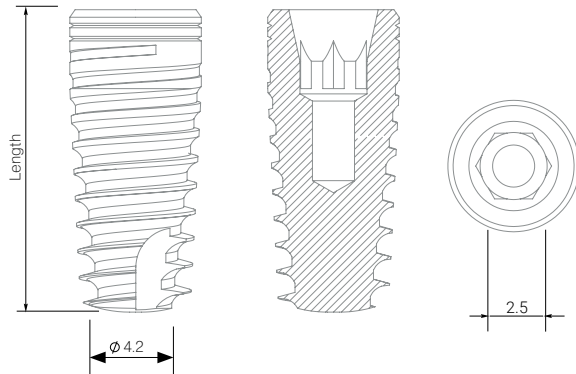
* The Protocol does not replace an appropriate training.

** It is used in I and II bone types.

Our drill 2.8 change color and go from red to black. During the transition period, we will deliver the red and black products to you, up to complete modification of the range.

Bio3 IMPLANT PROGRESSIVE

Wide platform



DIAMETER
5.0

INTERNAL HEX
2.5

**WIDE
PLATFORM**

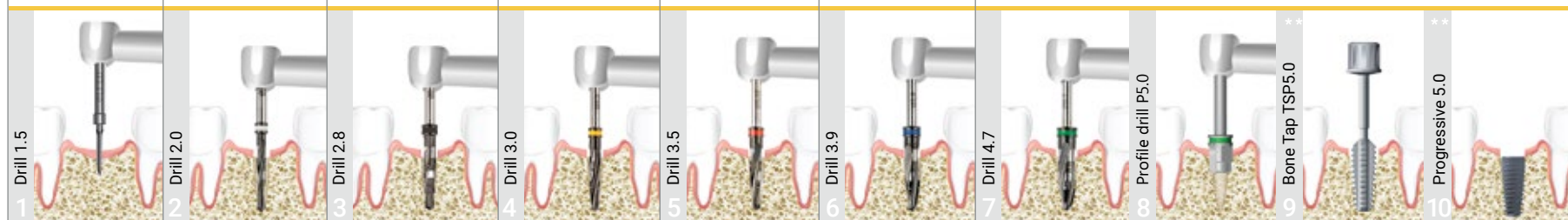
TITANIUM COVER SCREW 2.5

 is included in each implant set

*It is possible to order implants with SLA surface. Add «+SLA» to the relevant article in your order.

RECOMMENDED DRILLING SPEED

D1	800-1200	D1	800-1000	D1	600-800	D1	500-700	D1	500-700	D1	400-600	D1	400-600
D2	800-1200	D2	800-1000	D2	600-800	D2	600-800	D2	600-800	D2	500-700	D2	400-700
D3	800-1000	D3	700-900	D3	500-600	D3	500-600	D3	500-600	D3	500-600	D3	500-600
D4	800-1000	D4	600-800	D4	400-500	D4	400-500	D4	400-500	D4	400-500	D4	400-500

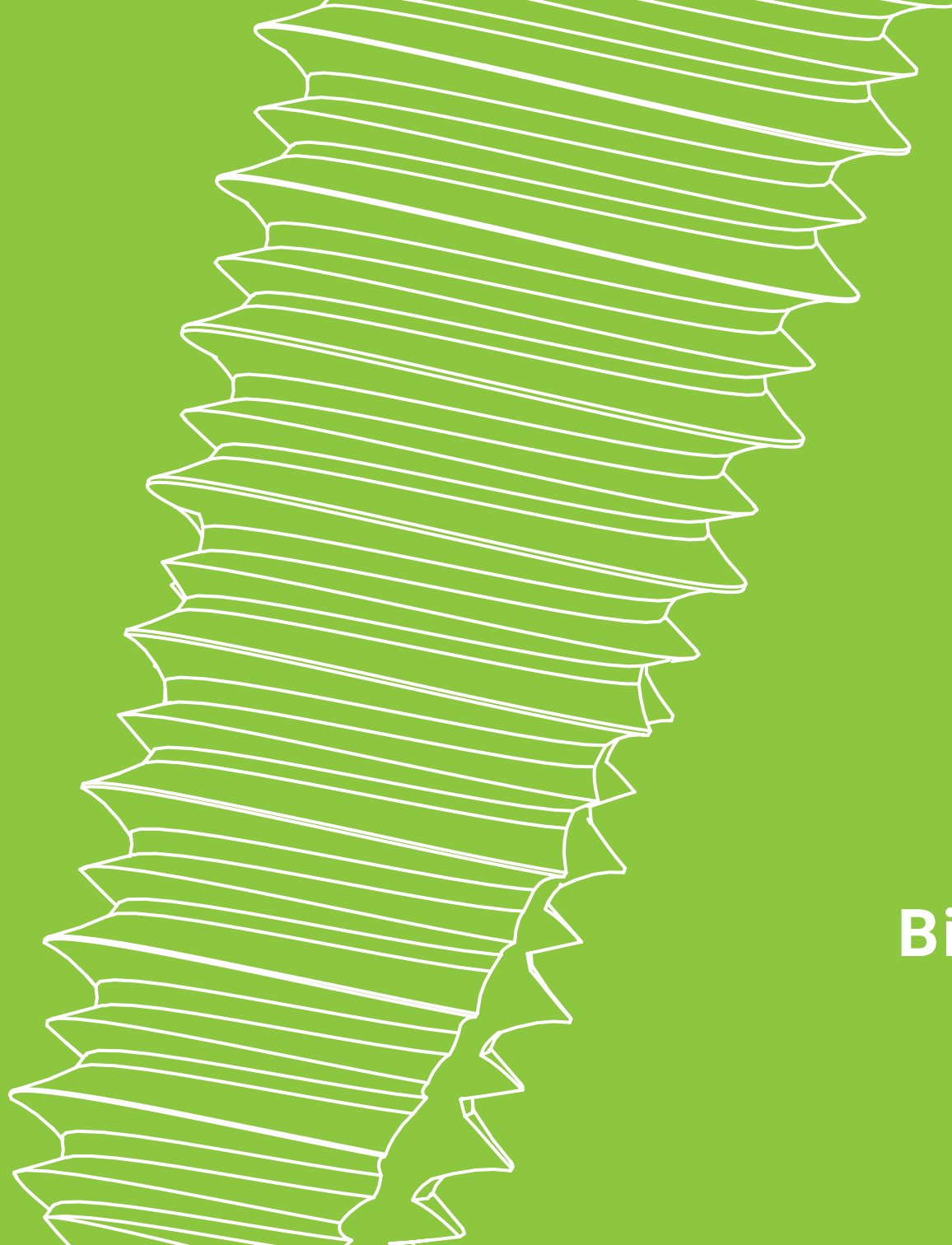


Implantation Protocol.*

* The Protocol does not replace an appropriate training.

** It is used in I and II bone types.

Our drill 2.8 change color and go from red to black. During the transition period, we will deliver the red and black products to you, up to complete modification of the range.



**Bio3 IMPLANT
ADVANCED**

Bio3 IMPLANT ADVANCED

Tapered dental implants range



CONICAL CONNECTION

Conical connection with inner hex provides precision implant–abutment connection and therefore, influences well on the stability process of permanent dental prostheses. 12° taper provides this connection with perfect fitting and tightness.

Conical connection is absolutely bacterial dense and shows excellent results in compression reduction in implant cervical part.

CHARACTERISTICS

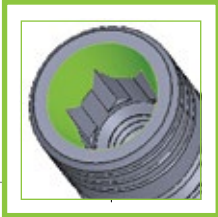
- Spiral-shaped implant with classical triangle thread of two recurrent lengths, self-tapping. It was developed for better primary stability. It can be used in various bone types.
- Conical implant body perfectly complies with the drill shape for more precision bone fitting.
- Implant body tapering ensures better self-tapping property. Noninvasive apical implant part prevents from anatomical damaging during sinus lifting.
- Platform switching

SURFACE

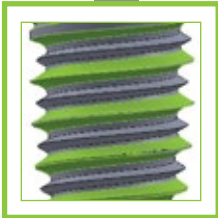
Bio3 Implants surface is the latest generation of dental implant surfaces. It is active and hydrophilic. The increased surface area provides perfect bone–implant connection. Due to this advantage the implant has higher primary stability and quick osseointegration. It can be used with one- or two-stage protocol.

APICAL PART

An apical part has sharp threads and antirotational sulci. Due to the special form of the apical part it can prevent from anatomical bone structure damage.



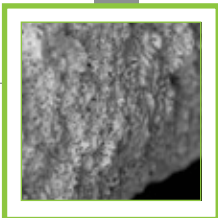
CONICAL CONNECTION



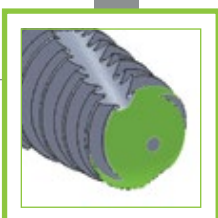
THREAD



GEOMETRY



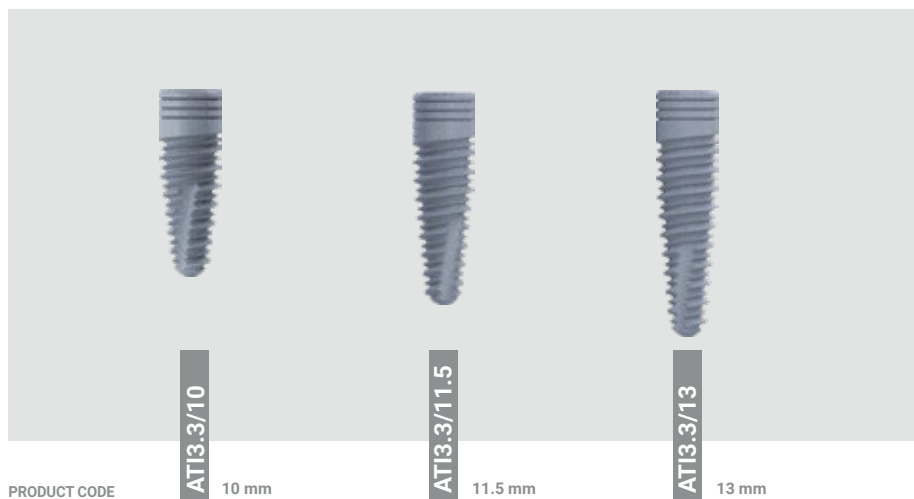
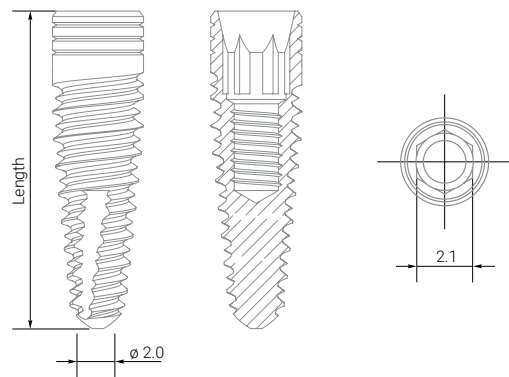
Bio3 IMPLANTS SURFACE



APICAL PART

Bio3 IMPLANT ADVANCED

Standard platform



PRODUCT CODE

10 mm

11.5 mm

13 mm

DIAMETER

3.3

INTERNAL HEX

2.1

**STANDARD
PLATFORM**

TITANIUM COVER SCREW 2.1



is included in each
implant set

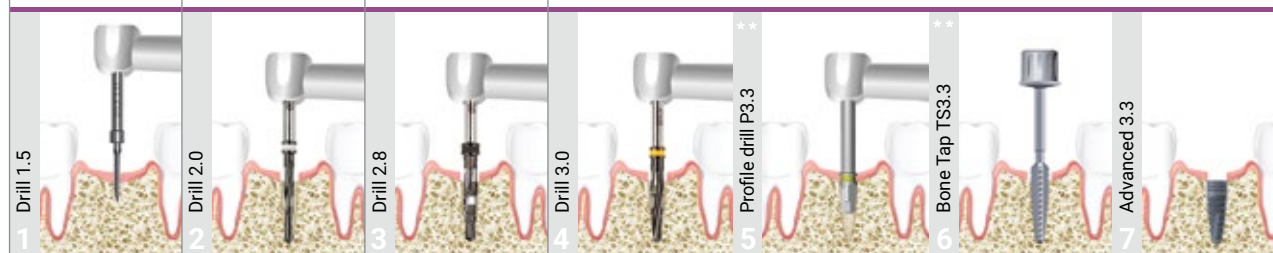
*It is possible to order implants with SLA surface. Add «+SLA» to the relevant article in your order.

ADVANCED IMPLANT

Advanced Implant has a unique design developed to provide perfect clinical results for various dental implantation procedures. Its root-shaped form and self-tapping triple thread enables to ease implantation process and provides high level of primary stability. The implant cervical part is done with micro thread for maximum contact of the implant with a cortical layer and prevents from bone resorption.

RECOMMENDED DRILLING SPEED

D1	800-1200	D1	800-1000	D1	600-800	D1	500-700
D2	800-1200	D2	800-1000	D2	600-800	D2	600-800
D3	800-1000	D3	700-900	D3	500-600	D3	500-600
D4	800-1000	D4	600-800	D4	400-500	D4	400-500



Implantation Protocol.*

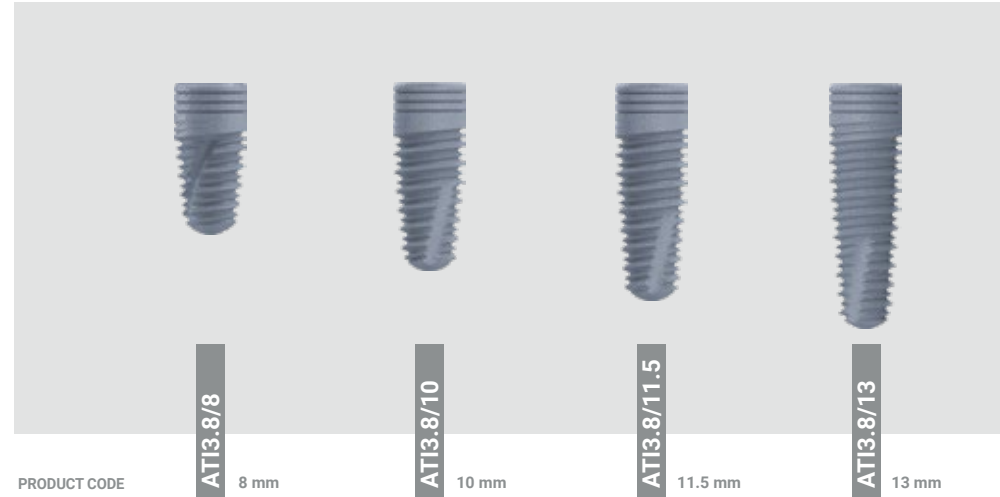
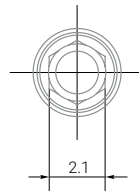
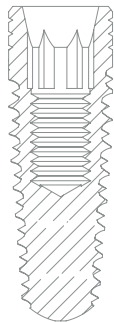
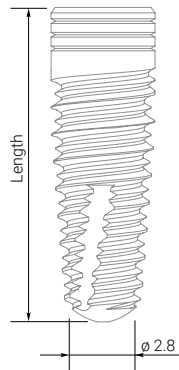
* The Protocol does not replace an appropriate training.

** It is used in I and II bone types.

Our drill 2.8 change color and go from red to black. During the transition period, we will deliver the red and black products to you, up to complete modification of the range.

Bio3 IMPLANT ADVANCED

Standard platform



PRODUCT CODE

AT13.8/8

8 mm

AT13.8/10

10 mm

AT13.8/11.5

11.5 mm

AT13.8/13

13 mm

**STANDARD
PLATFORM**

DIAMETER
3.8
INTERNAL HEX
2.1

TITANIUM COVER SCREW 2.1

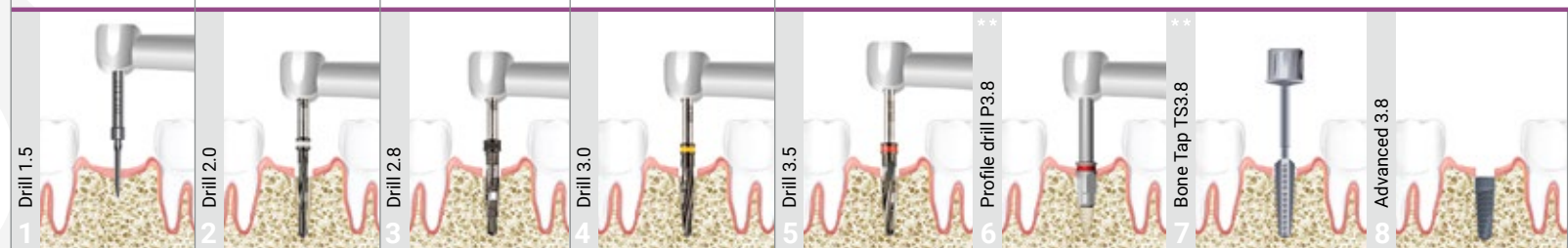


is included in each implant set

*It is possible to order implants with SLA surface. Add «+SLA» to the relevant article in your order.

RECOMMENDED DRILLING SPEED

D1	800-1200	D1	800-1000	D1	600-800	D1	500-700	D1	500-700
D2	800-1200	D2	800-1000	D2	600-800	D2	600-800	D2	600-800
D3	800-1000	D3	700-900	D3	500-600	D3	500-600	D3	500-600
D4	800-1000	D4	600-800	D4	400-500	D4	400-500	D4	400-500



Implantation Protocol.*

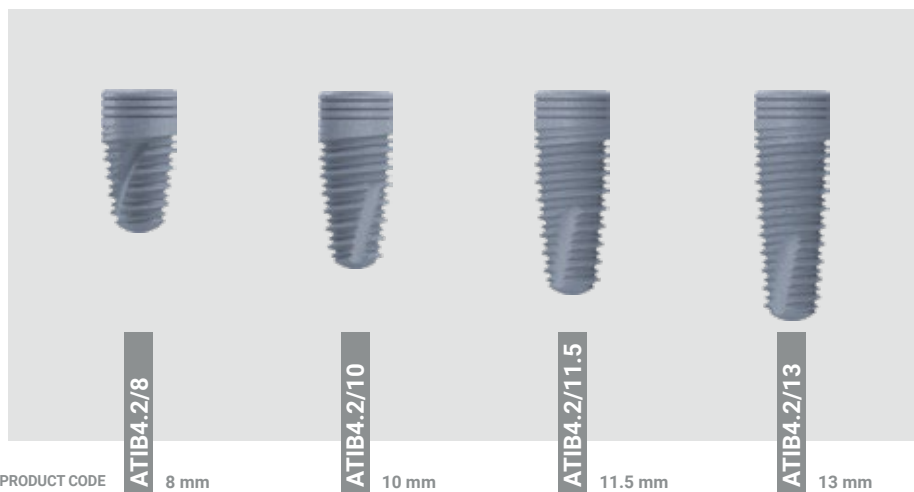
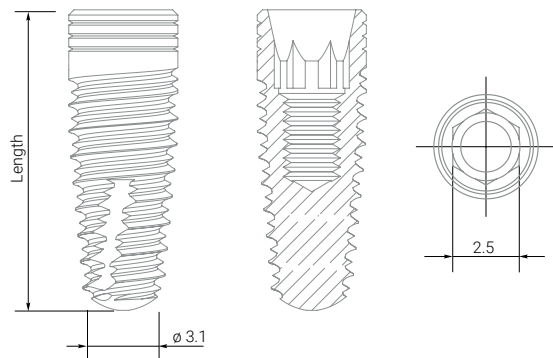
* The Protocol does not replace an appropriate training.

** It is used in I and II bone types.

Our drill 2.8 change color and go from red to black. During the transition period, we will deliver the red and black products to you, up to complete modification of the range.

Bio3 IMPLANT ADVANCED

Wide platform



DIAMETER
4.2
INTERNAL HEX
2.5

**WIDE
PLATFORM**

TITANIUM COVER SCREW 2.5

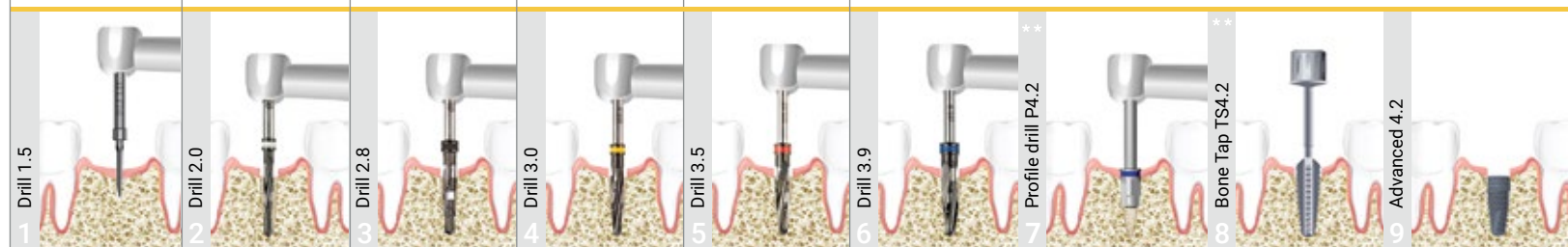


is included in each
implant set

*It is possible to order implants with SLA surface. Add «+SLA» to the relevant article in your order.

RECOMMENDED DRILLING SPEED

D1	800-1200	D1	800-1000	D1	600-800	D1	500-700	D1	500-700	D1	400-600
D2	800-1200	D2	800-1000	D2	600-800	D2	600-800	D2	600-800	D2	500-700
D3	800-1000	D3	700-900	D3	500-600	D3	500-600	D3	500-600	D3	500-600
D4	800-1000	D4	600-800	D4	400-500	D4	400-500	D4	400-500	D4	400-500



Implantation Protocol.*

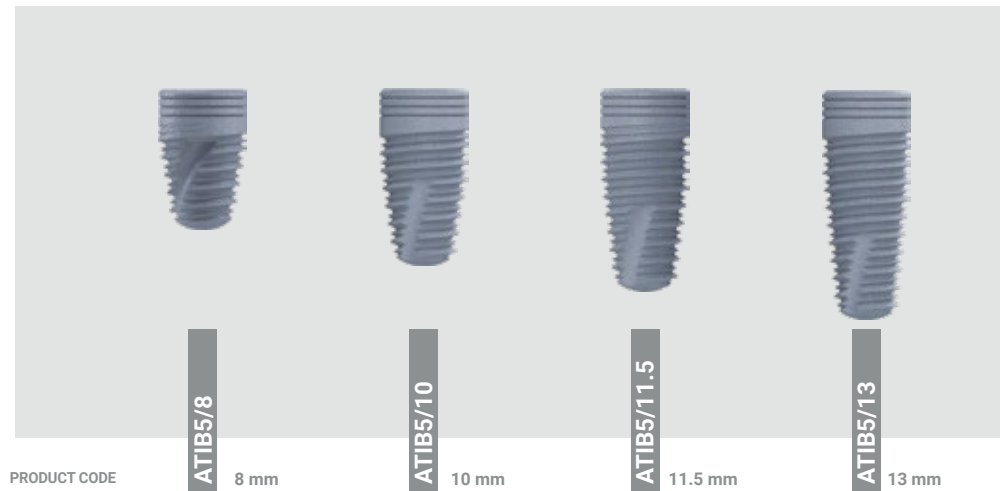
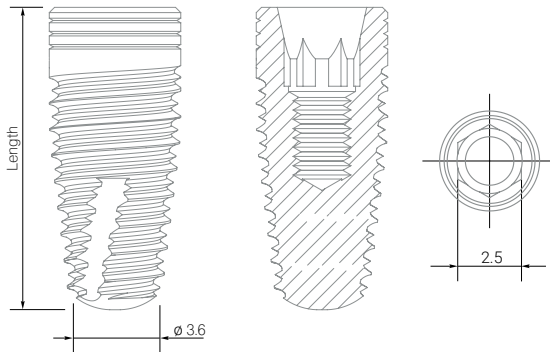
* The Protocol does not replace an appropriate training.

** It is used in I and II bone types.

Our drill 2.8 change color and go from red to black. During the transition period, we will deliver the red and black products to you, up to complete modification of the range.

Bio3 IMPLANT ADVANCED

Wide platform



DIAMETER
5.0
INTERNAL HEX
2.5

**WIDE
PLATFORM**

PRODUCT CODE **ATIB5/8** 8 mm **ATIB5/10** 10 mm **ATIB5/11.5** 11.5 mm **ATIB5/13** 13 mm

TITANIUM COVER SCREW 2.5

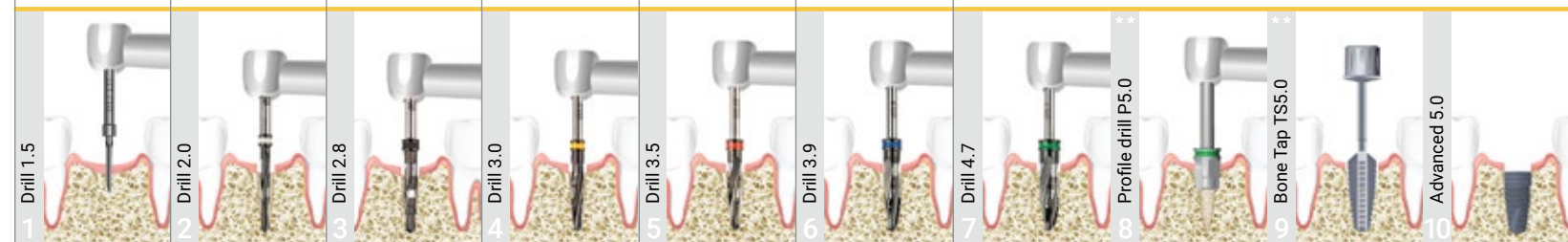


is included in each implant set

*It is possible to order implants with SLA surface. Add «+SLA» to the relevant article in your order.

RECOMMENDED DRILLING SPEED

D1 800-1200	D1 800-1000	D1 600-800	D1 500-700	D1 500-700	D1 400-600	D1 400-600
D2 800-1200	D2 800-1000	D2 600-800	D2 600-800	D2 600-800	D2 500-700	D2 400-700
D3 800-1000	D3 700-900	D3 500-600	D3 500-600	D3 500-600	D3 500-600	D3 500-600
D4 800-1000	D4 600-800	D4 400-500	D4 400-500	D4 400-500	D4 400-500	D4 400-500



Implantation Protocol.*

* The Protocol does not replace an appropriate training.

** It is used in I and II bone types.

Our drill 2.8 change color and go from red to black. During the transition period, we will deliver the red and black products to you, up to complete modification of the range.

Bio3 IMPLANTS

Premium Dental Implants



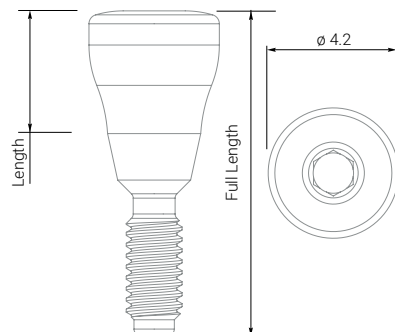
SUPRASTRUCTURES

HEALING CAPS

Standard platform

INTERNAL HEX

2.1



PRODUCT CODE

HEALING CAPS

DIAMETER

LENGTH

FULL LENGTH

STANDARD



GFS2



GFS3



GFS4



GFS5



GFS7

DIAMETER	4.2 mm	4.2 mm	4.2 mm	4.2 mm	4.2 mm
LENGTH	2 mm	3 mm	4 mm	5 mm	7 mm
FULL LENGTH	8.45 mm	9.45 mm	10.45 mm	11.45 mm	13.45 mm

WIDE



GFS/W2



GFS/W3



GFS/W4



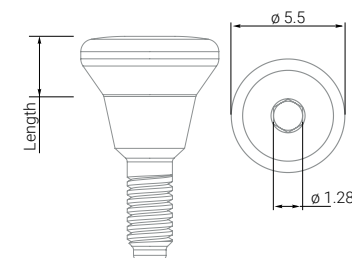
GFS/W5

DIAMETER	5.5 mm	5.5 mm	5.5 mm	5.5 mm
LENGTH	2 mm	3 mm	4 mm	5 mm
FULL LENGTH	7.72 mm	8.73 mm	9.73 mm	10.73 mm

Healing cap for standard platform (2.1 mm) with two various diameters – 4.2 mm and 5,5 mm.
It is installed using universal or hand prosthetic insertion driver.

MATERIAL Titanium Grade 5

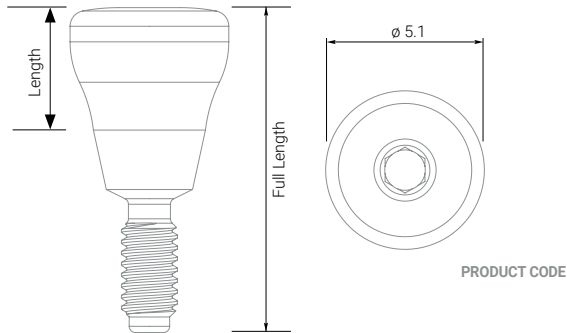
PRODUCT CODE



HEALING CAPS

Wide platform

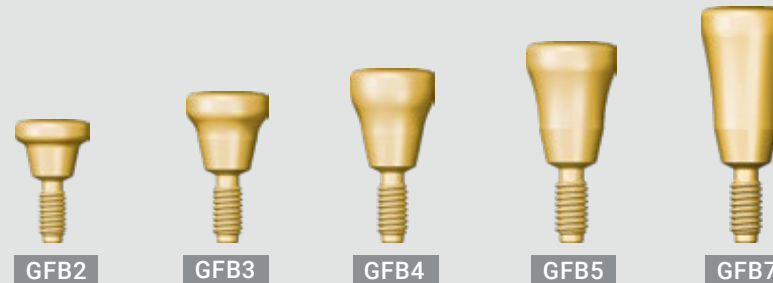
INTERNAL HEX
2.5



HEALING CAPS

DIAMETER
LENGTH
FULL LENGTH

STANDARD



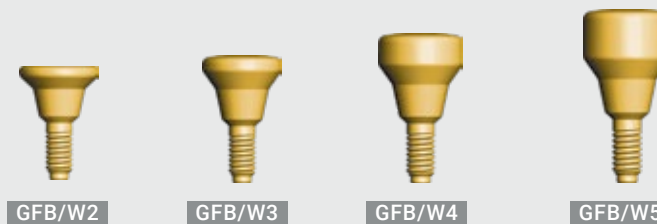
	GFB2	GFB3	GFB4	GFB5	GFB7
DIAMETER	5.1 mm	5.1 mm	5.1 mm	5.1 mm	5.1 mm
LENGTH	2 mm	3 mm	4 mm	5 mm	7 mm
FULL LENGTH	8.45 mm	9.45 mm	10.45 mm	11.45 mm	13.45 mm

Healing cap for wide platform (2.5 mm) with two various diameters – 5.1 mm and 5.5 mm. It is installed using universal or hand prosthetic insertion driver.

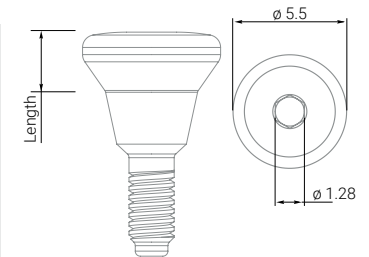
MATERIAL Titanium Grade 5

PRODUCT CODE

WIDE

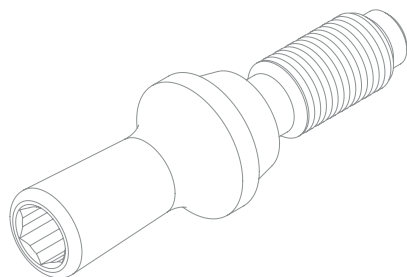


	GFB/W2	GFB/W3	GFB/W4	GFB/W5
DIAMETER	5.5 mm	5.5 mm	5.5 mm	5.5 mm
LENGTH	2 mm	3 mm	4 mm	5 mm
FULL LENGTH	7.9 mm	8.9 mm	9.9 mm	10.9 mm



COVER SCREW HEALING CAPS

Standard platform



DIAMETER

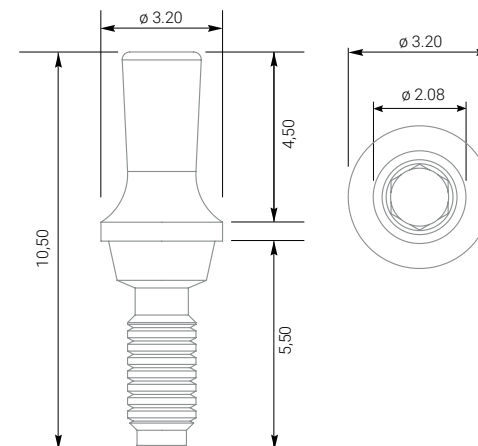
3.2 mm

LENGTH

10.5 mm

PRODUCT
CODE

GFNS



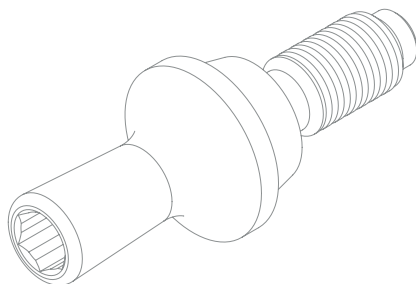
INTERNAL HEX

2.1

Wide platform

Ensures ideal gingival margin.

Suitable for any variants
of following dental prosthetics.



MATERIAL Titanium Grade 5

DIAMETER

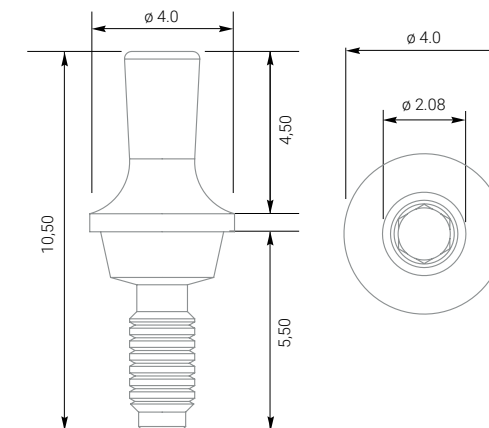
4.0 mm

LENGTH

10.5 mm

PRODUCT
CODE

GFNB

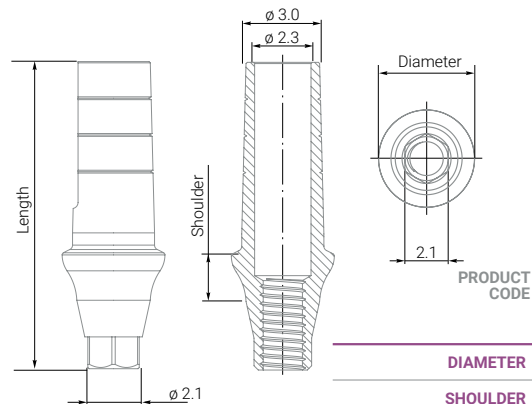


INTERNAL HEX

2.5

STRAIGHT ANATOMIC ABUTMENTS

Standard platform

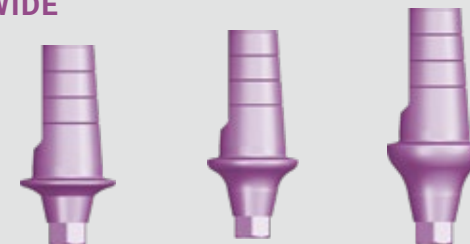


STANDARD



DIAMETER	4.2 mm	4.2 mm	4.2 mm
SHOULDER	1 mm	2 mm	3 mm
LENGTH	11.55 mm	12.55 mm	13.55 mm

WIDE



DIAMETER	5.5 mm	5.5 mm	5.5 mm
SHOULDER	1 mm	2 mm	3 mm
LENGTH	11.55 mm	12.55 mm	13.55 mm

INTERNAL HEX
2.1

Each abutment set includes:

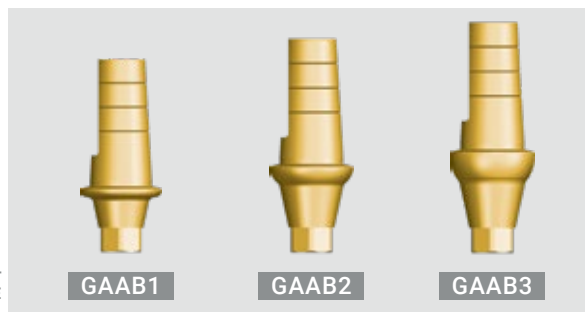
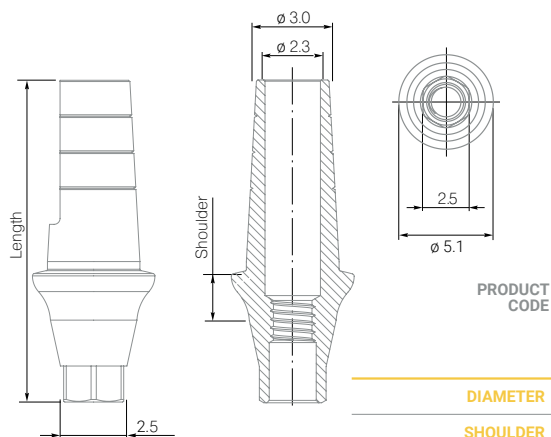


PROSTHETIC SCREW

MATERIAL Titanium Grade 5

Anatomic titanium abutment for standard platform (2.1 mm) with 1. 2. 3 mm shoulders that has two various shoulder diameter width – 4.2 mm and 5.5 mm. It is installed using universal or hand prosthetic insertion driver.

Wide platform



DIAMETER	5.1 mm	5.1 mm	5.1 mm
SHOULDER	1 mm	2 mm	3 mm
LENGTH	12.4 mm	13.4 mm	14.4 mm

INTERNAL HEX
2.5

Each abutment set includes:



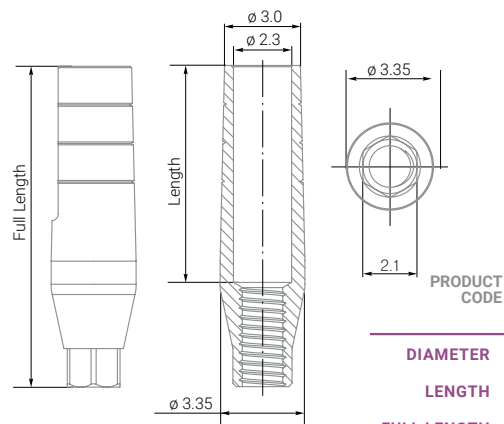
PROSTHETIC SCREW

Anatomic titanium abutment for wide platform (2.5 mm) with 1. 2. 3 mm shoulders. It is installed using universal or hand prosthetic insertion driver. Prosthetic screw in each set.

MATERIAL Titanium Grade 5

STRAIGHT ABUTMENTS

Standard platform



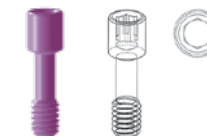
DIAMETER	5.0 mm	3.35 mm	3.35 mm	3.35 mm
LENGTH	9 mm	6.7 mm	8.7 mm	11.7 mm
FULL LENGTH	13.7 mm	10.55 mm	12.55 mm	15.55 mm

Titanium straight abutment for standard platform (2.1 mm). Prosthetic screw in each set. It is installed using universal or hand prosthetic insertion driver.

INTERNAL HEX

2.1

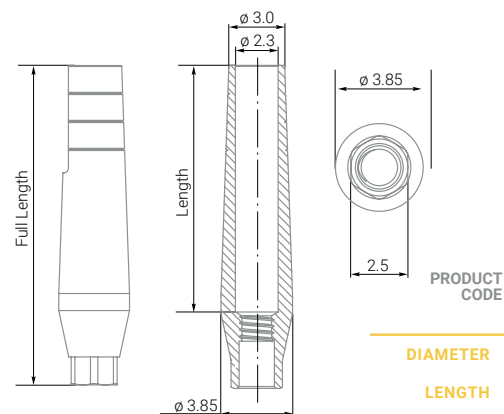
Each abutment set includes:



PROSTHETIC SCREW

MATERIAL Titanium Grade 5

Wide platform



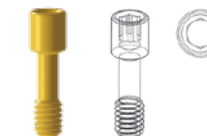
DIAMETER	5.5 mm	3.85 mm	3.85 mm	3.85 mm
LENGTH	9 mm	8.07 mm	10.07 mm	13.07 mm
FULL LENGTH	13.9 mm	12.12 mm	14.12 mm	17.12 mm

Titanium straight abutment for wide platform (2.5 mm). Prosthetic screw in each set. It is installed using universal or hand prosthetic insertion driver.

INTERNAL HEX

2.5

Each abutment set includes:



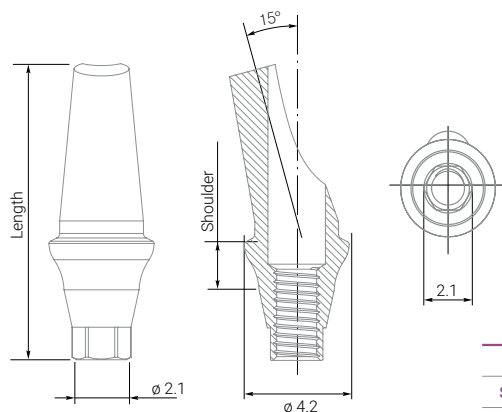
PROSTHETIC SCREW

MATERIAL Titanium Grade 5

ANGULATED ANATOMIC ABUTMENTS 15°

Standard platform

INTERNAL HEX
2.1



PRODUCT CODE	EAAS15	EAAS1501	EAAS1502	EAAS1503
DIAMETER	3.35 mm	4.2 mm	4.2 mm	4.2 mm
SHOULDER		1 mm	2 mm	3 mm
LENGTH	11.0 mm	10.85 mm	11.85 mm	12.85 mm
ANGLE	15°	15°	15°	15°

Each abutment set includes:



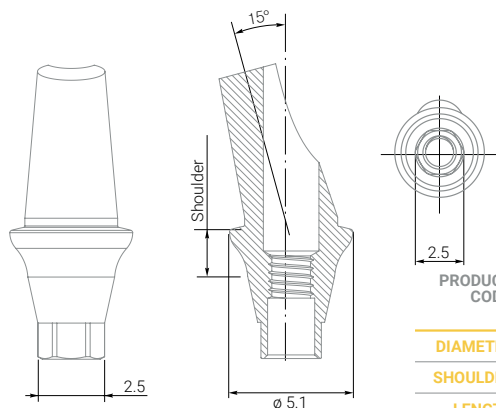
PROSTHETIC SCREW

Angulated anatomic titanium abutment 15° for standard platform (2.1 mm) with 1. 2. 3 mm shoulder or without it.
Prosthetic screw in each set.
It is installed using universal or hand prosthetic insertion driver.

MATERIAL Titanium Grade 5

Wide platform

INTERNAL HEX
2.5



PRODUCT CODE	EAAB15	EAAB1501	EAAB1502	EAAB1503
DIAMETER	3.85 mm	5.1 mm	5.1 mm	5.1 mm
SHOULDER		1 mm	2 mm	3 mm
LENGTH	12.85 mm	11.55 mm	12.2 mm	13.2 mm
ANGLE	15°	15°	15°	15°

Each abutment set includes:



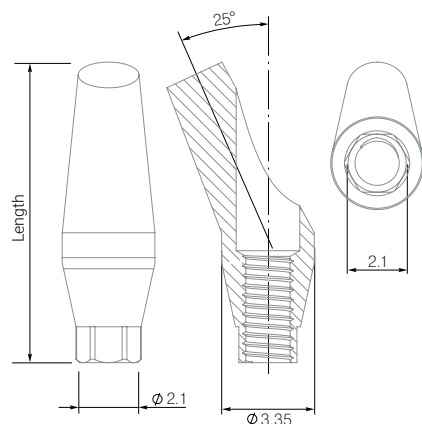
PROSTHETIC SCREW

Angulated anatomic titanium abutment 15° for wide platform (2.5 mm) with 1. 2. 3 mm shoulder or without it.
Prosthetic screw in each set.
It is installed using universal or hand prosthetic insertion driver.

MATERIAL Titanium Grade 5

ANGULATED ANATOMIC ABUTMENTS 25°

Standard platform

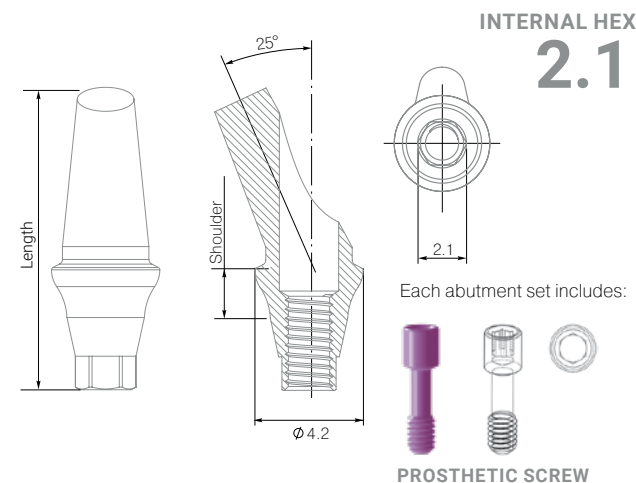


PRODUCT CODE

EAAS25

EAAS2502

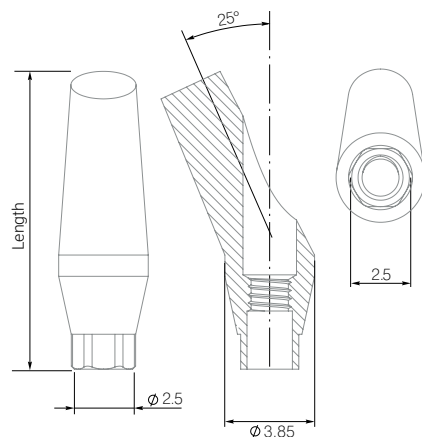
DIAMETER	3.35 mm	4.2 mm
SHOULDER		2 mm
LENGTH	10.9 mm	11.75 mm
ANGLE	25°	25°



Angulated anatomic titanium abutment 25° for standard platform (2.1 mm) with 2 mm shoulder or without it. Prosthetic screw in each set. It is installed using universal or hand prosthetic insertion driver.

MATERIAL Titanium Grade 5

Wide platform

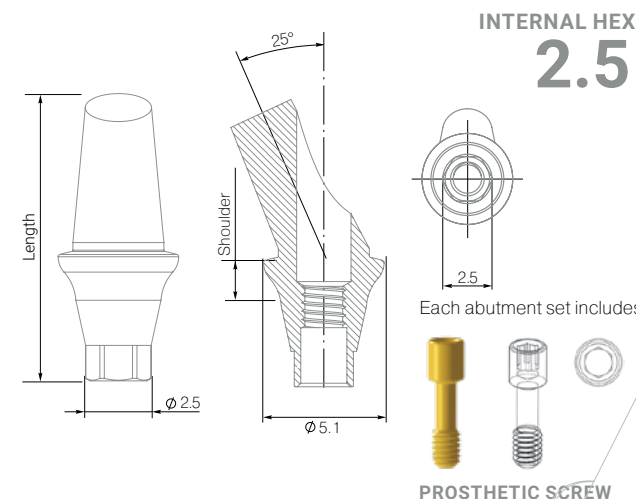


PRODUCT CODE

EAAB25

EAAB2502

DIAMETER	3.85 mm	5.1 mm
SHOULDER		2 mm
LENGTH	12.8 mm	12.15 mm
ANGLE	25°	25°

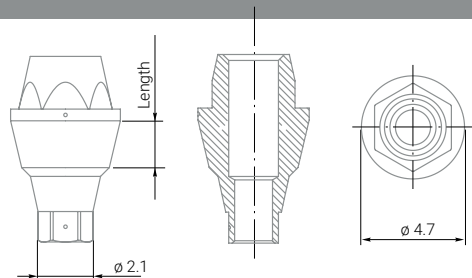


MATERIAL Titanium Grade 5

Angulated anatomic titanium abutment 25° for wide platform (2.5 mm) with 2 mm shoulder or without it. Prosthetic screw in each set. It is installed using universal or hand prosthetic insertion driver.

SCREW RETAINED ABUTMENTS

Standard platform



The abutment is used to renew a single construction or a fixed bridge with screw retention.
Screw in with a maximum force of 20 newton.

PRODUCT
CODE



VAAS1



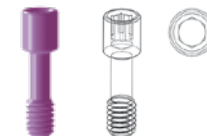
VAAS2



VAAS3

DIAMETER	4.7 mm	4.7 mm	4.7 mm
LENGTH	1 mm	2 mm	3 mm

Each abutment set includes:



PROSTHETIC SCREW

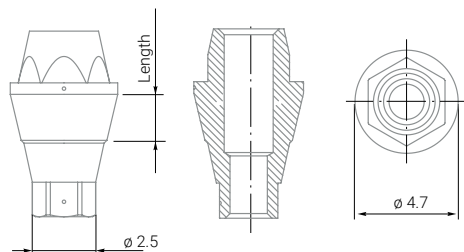
INTERNAL HEX
2.1



CS VAAS
cover screw

MATERIAL Titanium Grade 5

Wide platform



The abutment is used to renew a single construction or a fixed bridge with screw retention.
Screw in with a maximum force of 20 newton.

PRODUCT
CODE



VAAB1



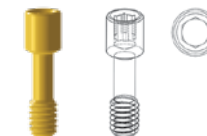
VAAB2



VAAB3

DIAMETER	4.7 mm	4.7 mm	4.7 mm
LENGTH	1 mm	2 mm	3 mm

Each abutment set includes:



PROSTHETIC SCREW

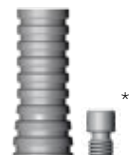
INTERNAL HEX
2.5



CS VAAB
cover screw

MATERIAL Titanium Grade 5

Titanium sleeve for screw
retained abutment



GAVAA

Healing Cap
for screw retained
abutment



GAES2

Burned-out plastic sleeve
for screw retained abutment



Plastic VAAS Plastic VAAS
NON HEX

Temporary PEEK sleeve
for screw retained abutment



TGAS 1

Laboratory Analog
for screw retained abutment



IAES

Transfer
for screw
retained abutment



SAES15

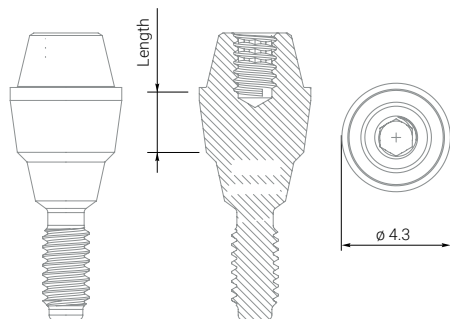
* Screw SSA is included

SCREW RETAINED ABUTMENTS

Standard platform

INTERNAL HEX

2.1



MATERIAL Titanium Grade 5

PRODUCT
CODE

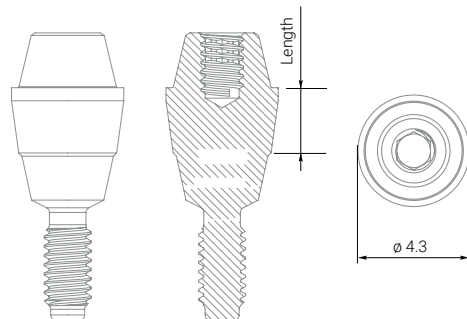
DIAMETER	4.3 mm	4.3 mm	4.3 mm
LENGTH	1 mm	2 mm	3 mm

The abutment is used to renew a single construction or a fixed bridge with screw retention.
Screw in with a maximum force of 20 newton.

Wide platform

INTERNAL HEX

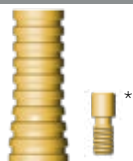
2.5



MATERIAL Titanium Grade 5

PRODUCT
CODE

DIAMETER	4.3 mm	4.3 mm	4.3 mm
LENGTH	1 mm	2 mm	3 mm

Titanium sleeve for screw
retained abutment /
angulated multi-unit

GIMV

Castable sleeve for screw
retained abutment /
angulated multi-unit

CSMU

Healing Cap
for screw
retained abutment /
angulated multi-unit

GIMA

Healing Cap Wide
for screw
retained abutment /
angulated multi-unit

GIMA-W

Burned-out plastic sleeve
for screw retained abutment /
angulated multi-unit

Plastic TCMS

Temporary PEEK sleeve
for screw retained abutment /
angulated multi-unit

TGMN 1

Laboratory Analog
for screw retained abutment /
angulated multi-unit

IAEN

Transfer
for screw
retained abutment /
angulated multi-unit

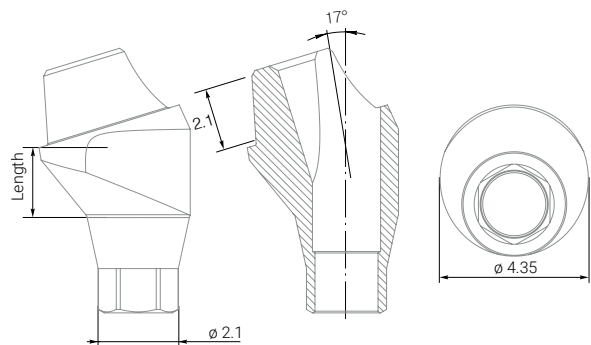
SOKM15

* Screw for GIMA is included

ANGULATED MULTI-UNITS 17°

Standard platform

INTERNAL HEX
2.1



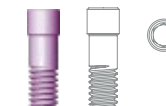
PRODUCT
CODE



DIAMETER	4.35 mm	4.35 mm	4.35 mm
LENGTH	1 mm	2 mm	3 mm

Angulated multi-unit 17° of a standard/wide platform is intended for the construction with screw retention during the treatment of partial or full adentia. It is used in cases during which the implant is placed at an angle. The set includes a bone screw. A multifunctional torque wrench is used for the installation.

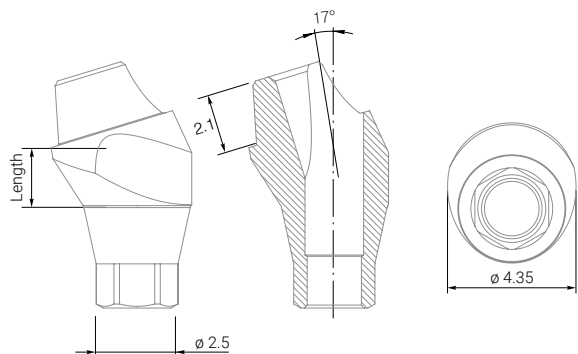
Each multi-unit basis set includes:



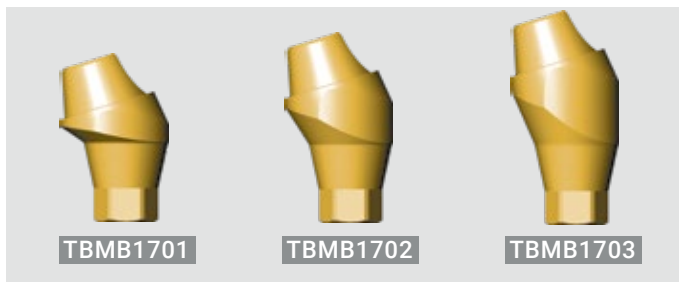
PROSTHETIC SCREW

Wide platform

INTERNAL HEX
2.5

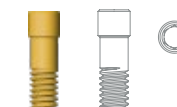


PRODUCT
CODE



DIAMETER	4.35 mm	4.35 mm	4.35 mm
LENGTH	1 mm	2 mm	3 mm

Each multi-unit basis set includes:



PROSTHETIC SCREW

Titanium sleeve for screw retained abutment / angulated multi-unit	Castable sleeve for screw retained abutment / angulated multi-unit	Healing Cap for screw retained abutment / angulated multi-unit	Healing Cap Wide for screw retained abutment / angulated multi-unit	Burned-out plastic sleeve for screw retained abutment / angulated multi-unit	Temporary PEEK sleeve for screw retained abutment / angulated multi-unit	Laboratory Analog for screw retained abutment / angulated multi-unit	Transfer for screw retained abutment / angulated multi-unit
GIMV	CSMU	GIMA	GIMA-W	Plastic TCMS	TGMN 1	IAEN	SOKM15

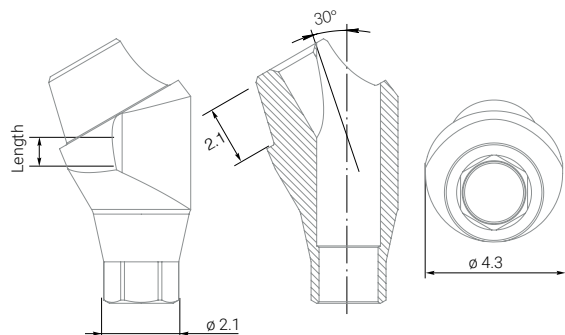
* Screw for GIMA is included

ANGULATED MULTI-UNITS 30°

Standard platform

INTERNAL HEX

2.1

PRODUCT
CODE

TBMS3001

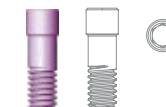
TBMS3002

TBMS3003

DIAMETER	4.3 mm	4.3 mm	4.3 mm
LENGTH	1 mm	2 mm	3 mm

Angulated multi-unit 30° of a standard/wide platform is intended for the construction with screw retention during the treatment of partial or full adentia. It is used in cases during which the implant is placed at an angle. The set includes a bone screw. A multifunctional torque wrench is used for the installation.

Each multi-unit basis set includes:

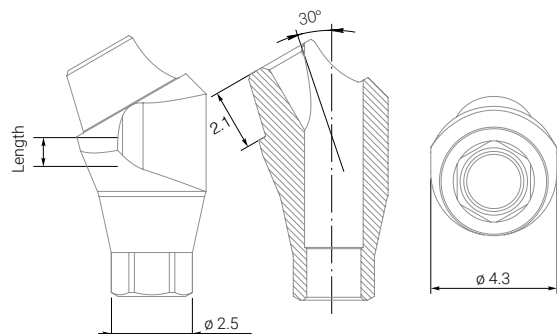


PROSTHETIC SCREW

Wide platform

INTERNAL HEX

2.5

PRODUCT
CODE

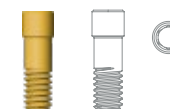
TBMB3001

TBMB3002

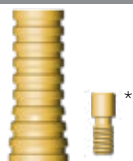
TBMB3003

DIAMETER	4.3 mm	4.3 mm	4.3 mm
LENGTH	1 mm	2 mm	3 mm

Each multi-unit basis set includes:



PROSTHETIC SCREW

Titanium sleeve for screw
retained abutment /
angulated multi-unit

GIMV

Castable sleeve for screw
retained abutment /
angulated multi-unit

CSMU

Out-Burnt
Plastic CapHealing Cap
for screw
retained abutment /
angulated multi-unit

GIMA

Healing Cap Wide
for screw
retained abutment /
angulated multi-unit

GIMA-W

Burned-out plastic sleeve
for screw retained abutment /
angulated multi-unit

Plastic TCMS

Temporary PEEK sleeve
for screw retained abutment /
angulated multi-unit

TGMN 1

Laboratory Analog
for screw retained abutment /
angulated multi-unit

IAEN

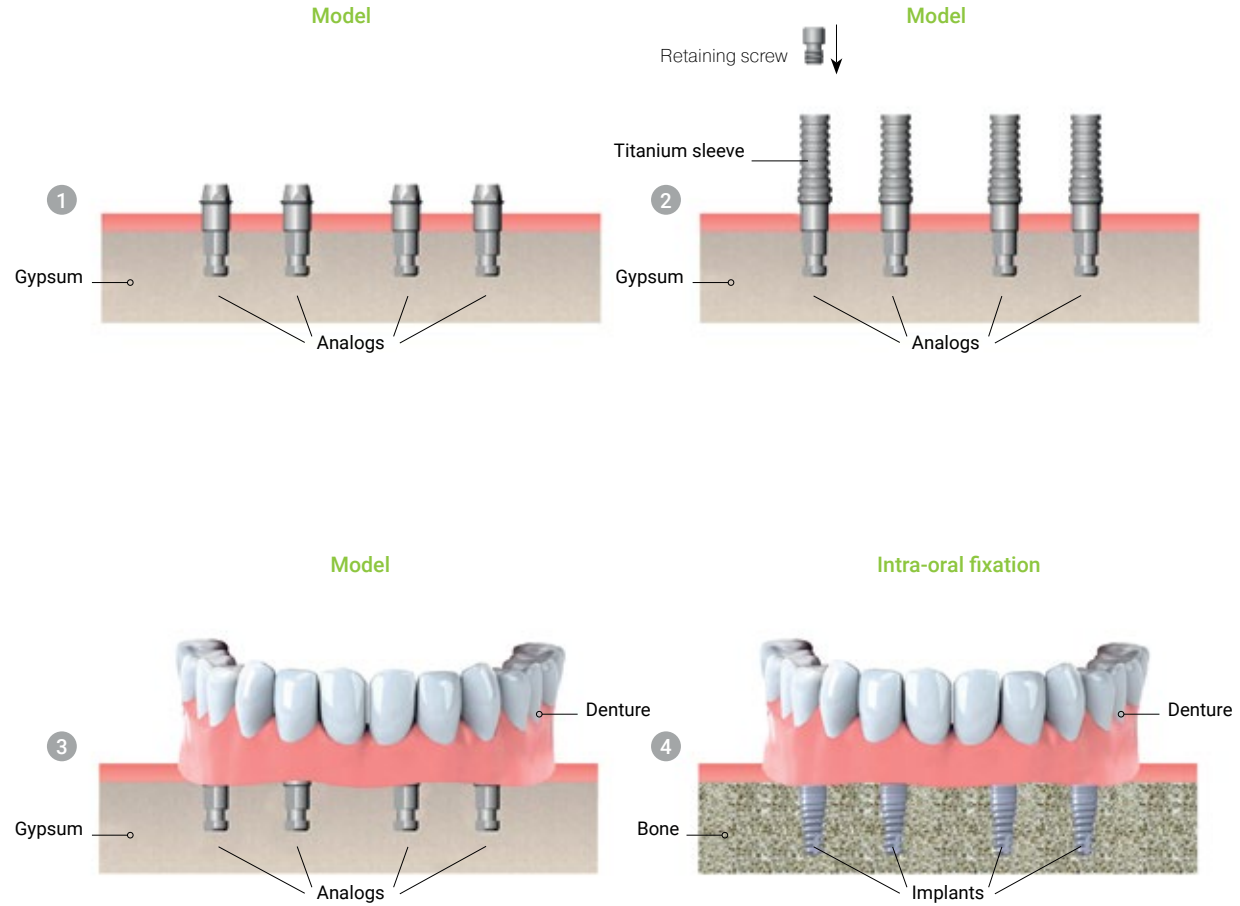
Transfer
for screw
retained abutment /
angulated multi-unit

SOKM15

* Screw for GIMA is included

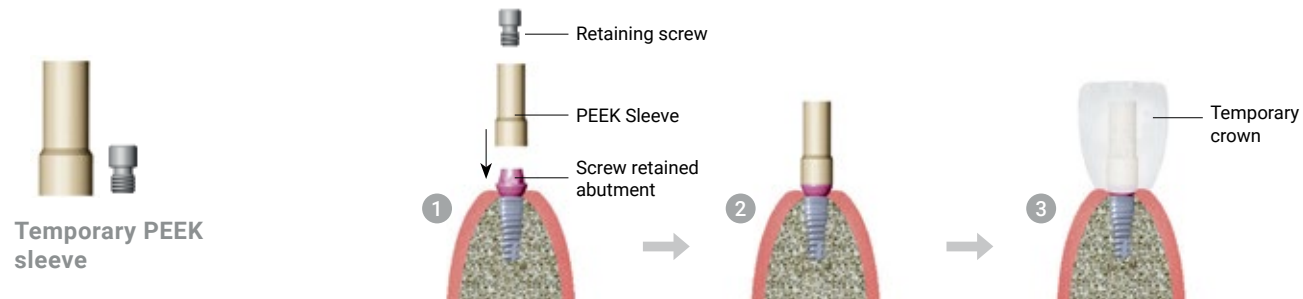
SCREW RETAINED ABUTMENTS MANUAL

Using titanium sleeve

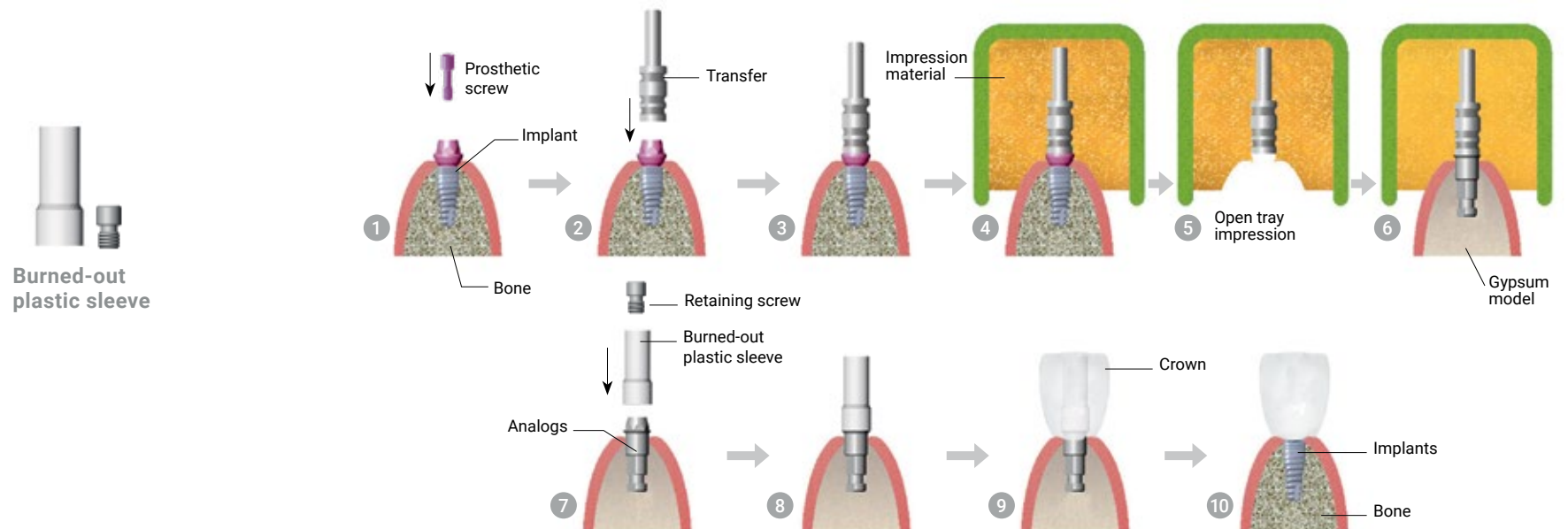


SCREW RETAINED ABUTMENTS MANUAL

Using temporary PEEK sleeve for screw retained abutment



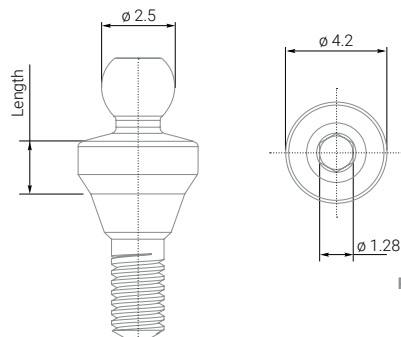
Using burned-out plastic sleeve for individual construction production



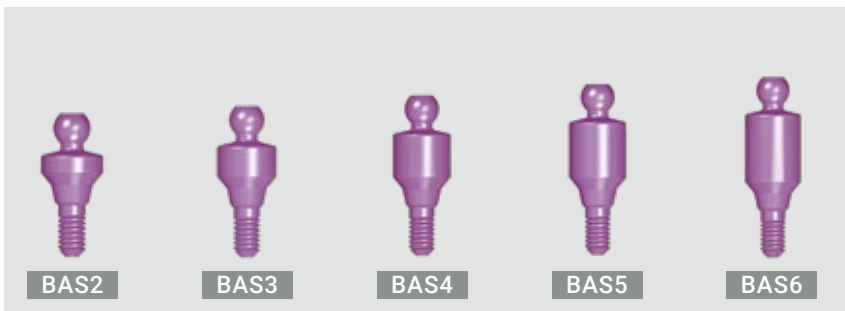
BALL ATTACHMENTS

Standard platform

INTERNAL HEX
2.1



PRODUCT
CODE

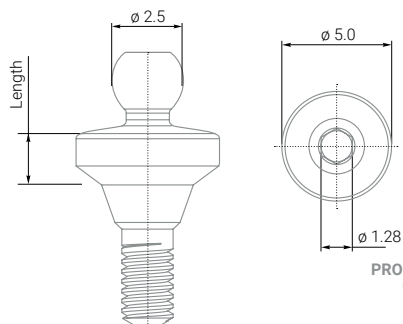


DIAMETER	4.2 mm	4.2 mm	4.2 mm	4.2 mm	4.2 mm
LENGTH	2 mm	3 mm	4 mm	5 mm	6 mm

Ball attachment for overdentures and removable dentures fixation for standard platform (2.1 mm) as an element for dental prosthetics on two or more implants.
It is installed using universal or hand prosthetic insertion driver.

MATERIAL Titanium Grade 5

Wide platform



PRODUCT
CODE



DIAMETER	5.0 mm	5.0 mm	5.0 mm	5.0 mm	5.0 mm
LENGTH	2 mm	3 mm	4 mm	5 mm	6 mm

Ball attachment for overdentures and removable dentures fixation for wide platform (2.5 mm) as an element for dental prosthetics on two or more implants.
It is installed using universal or hand prosthetic insertion driver.

MATERIAL Titanium Grade 5

MKBA  Metal Cap for Ball Attachment

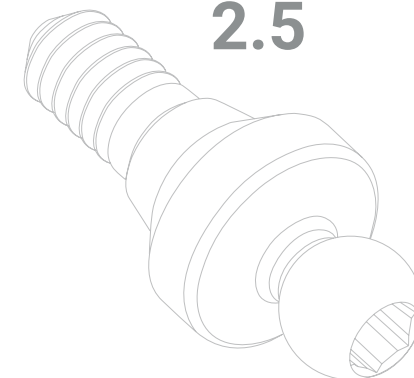
WKBA  Soft Cap for Ball Attachment

SKBA  Standard Cap for Ball Attachment

FKBA  Hard Cap for Ball Attachment

PRB  Plastic Ring for Ball Attachment

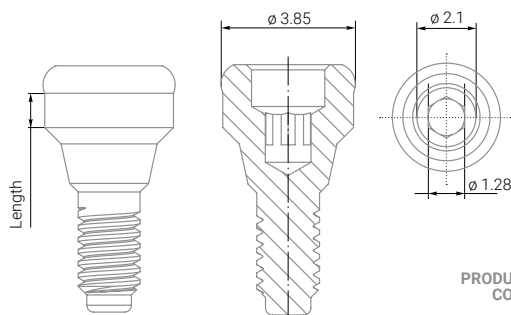
INTERNAL HEX
2.5



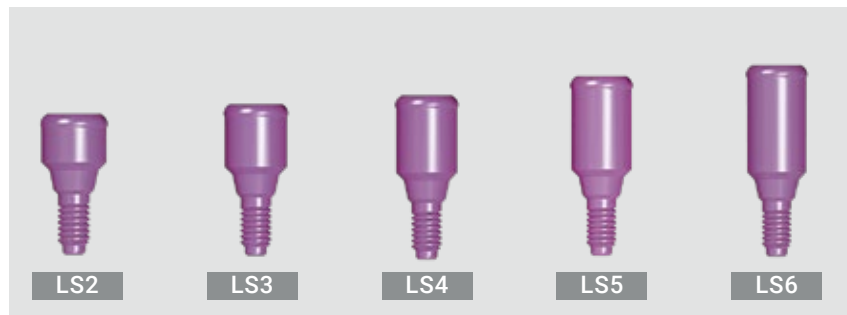
LOCATORS

Standard platform

INTERNAL HEX
2.1



PRODUCT CODE



DIAMETER	3.85 mm	3.85 mm	3.85 mm	3.85 mm	3.85 mm
LENGTH	2 mm	3 mm	4 mm	5 mm	6 mm

Locators for overdentures and removable dentures fixation for standard platform (2.1 mm) as an element for dental prosthetics on two or more implants. It is installed using universal or hand prosthetic insertion driver.

MATERIAL Titanium Grade 5

MKL Metal Cap for locators

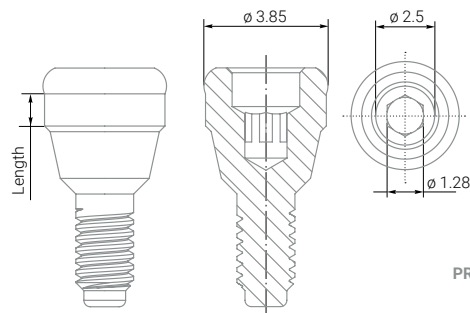
WKL Soft Cap for locators

SKL Standard Cap for locators

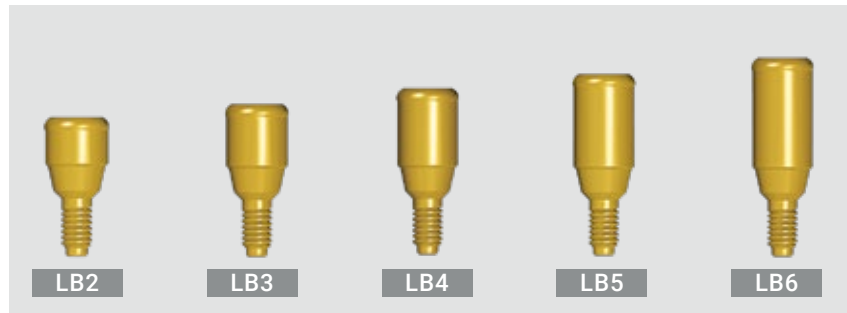
FKL Hard Cap for locators

Wide platform

INTERNAL HEX
2.5



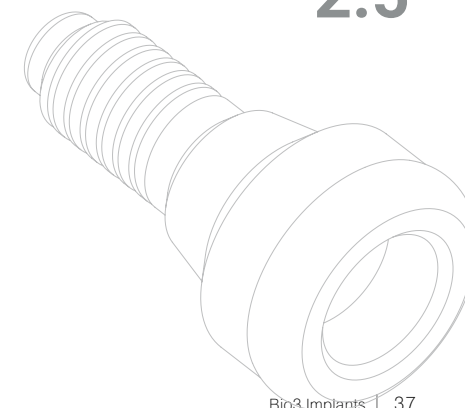
PRODUCT CODE



DIAMETER	3.85 mm	3.85 mm	3.85 mm	3.85 mm	3.85 mm
LENGTH	2 mm	3 mm	4 mm	5 mm	6 mm

MATERIAL Titanium Grade 5

Locators for overdentures and removable dentures fixation for wide platform (2.5 mm) as an element for dental prosthetics on two or more implants. It is installed using universal or hand prosthetic insertion driver.

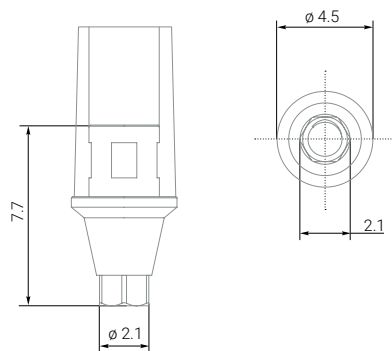


TITANIUM BASIS WITH A BURNED-OUT PLASTIC SLEEVE

Standard platform

INTERNAL HEX

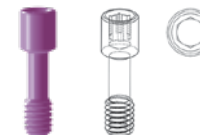
2.1

PRODUCT
CODE

TBKS1

DIAMETER	4.5 mm
LENGTH	7.7 mm

Each abutment set includes:



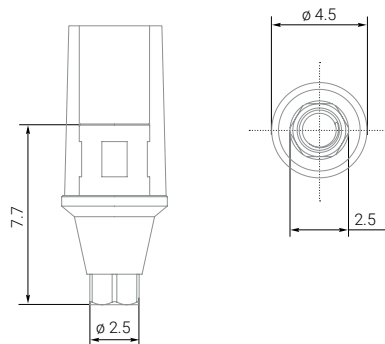
PROSTHETIC SCREW

MATERIAL Titanium Grade 5
Burned out plastic

Wide platform

INTERNAL HEX

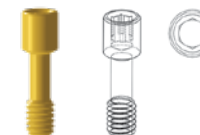
2.5

PRODUCT
CODE

TBKB1

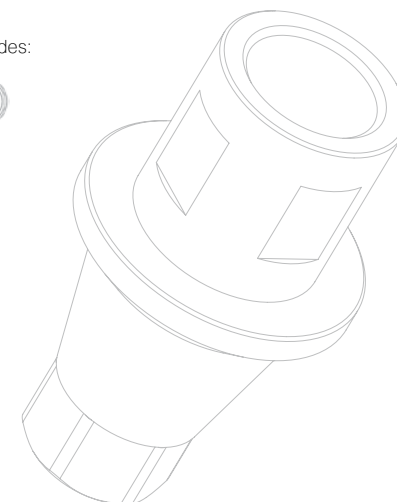
DIAMETER	4.5 mm
LENGTH	7.7 mm

Each abutment set includes:



PROSTHETIC SCREW

MATERIAL Titanium Grade 5
Burned out plastic



TITANIUM BASIS WITH A BURNED-OUT PLASTIC SLEEVE

Manual

Titanium basis with burned-out plastic sleeve simplifies the technician's work while crowns modeling as it is burnt out and is not subject to shrinkage or deformation

This suprastructure is intended for manufacturing of individual bonding crowns to the standard base.

This suprastructure usage simplifies the technician's work while crowns modeling as the burned-out plastic sleeve is burnt out and is not subject to shrinkage or deformation, and it simply burns out at high temperatures saving the precision between titanium base and future crown.

The impression obtained by standard direct method along with the suprastructure is passed to the technical laboratory.

Step 1:

A lab technician makes a gypsum model and fastens titanium platform in it together with a plastic cap.

Step 2:

Lab technician molds wax model of the future tooth crown on the cap.

Step 3:

Molded wax model along with the cap is being removed by lab technician from the titanium basis.

Step 4:

The model along with the cap is transmitted to the casting lab for the future crown basis casting.

Step 5:

In the casting laboratory a sprue is being attached to the wax. The sprue in its turn is attached to the main sprue thereby forming the sprue tree.

Step 6:

A metal ring is being put on the sprue tree. This metal ring will serve as a form for filling the investment material.

Step 7:

The form with the sprue tree is filled in with investment material (special high-temperature pulp for casting).

Step 8:

After solidification of the investment material the form is placed into a muffle furnace, where at a temperature of 900-1100 C° the wax and ash-free sleeve burn out, forming a blow hole for future casting.

Step 9:

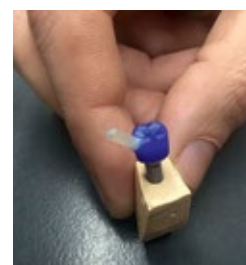
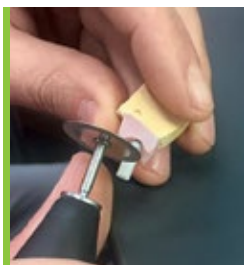
Into the blow hole, formed by burning out of wax and plastic, the desired free-flowing metal or free-flowing ceramics (in a fluid state) is being filled in. Using the method of vacuum or centrifugal casting, blow holes are filled in with dental alloy (CoCr or NiCr).

Step 10:

The crown is released from sprues and is being sandblasted; ceramic firing on it and it is being baked.

Step 11:

Prefabricated crown is bonded to the titanium platform with chemical cure composite.



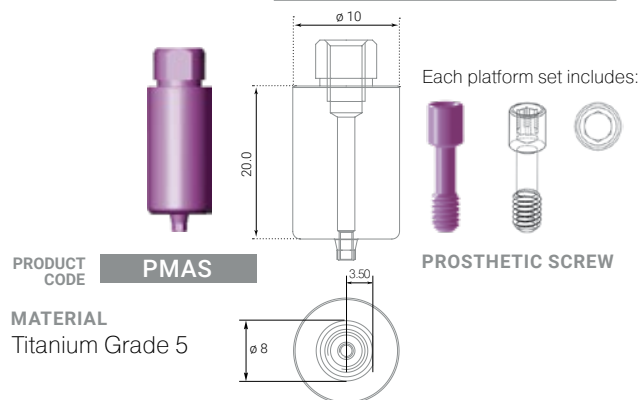
PROSTHETICS FOR CAD/CAM

Standard platform

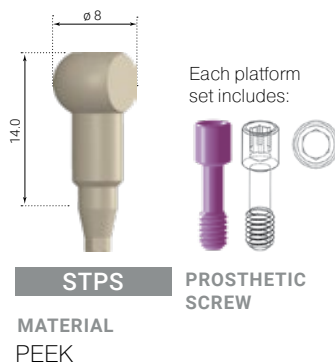
PREMILL ABUTMENT

DIAMETER 10 mm

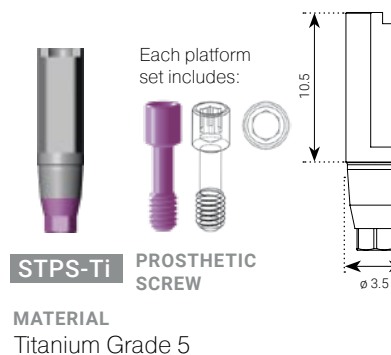
FUNCTIONAL LENGTH 20.0 mm



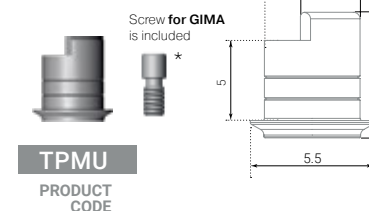
Scan-abutment for CAD/CAM TPS



Scan-abutment Narrow



Titanium platform for CAD/CAM MU

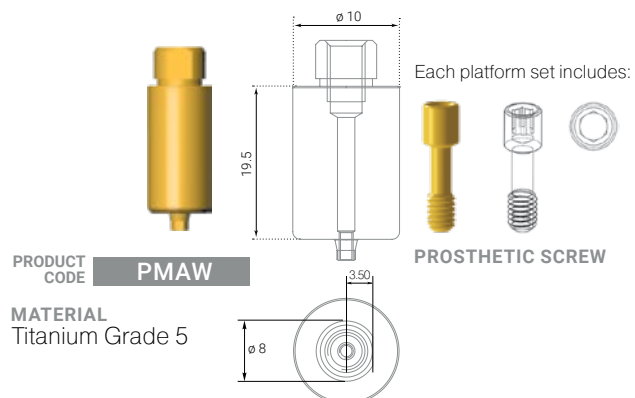


Wide platform

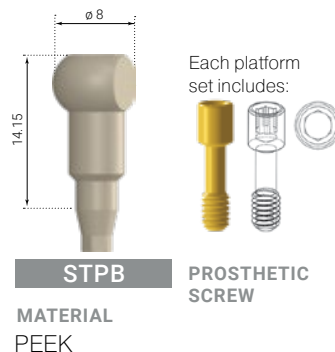
PREMILL ABUTMENT

DIAMETER 10 mm

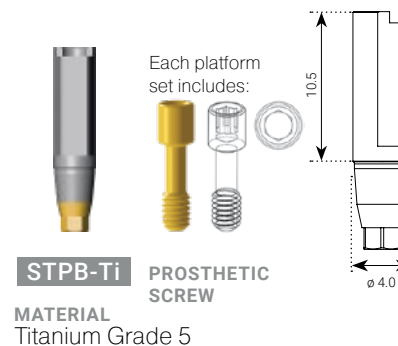
FUNCTIONAL LENGTH 19.5 mm



Scan-abutment for CAD/CAM TPS



Scan-abutment Narrow



Scan Abutment for MU

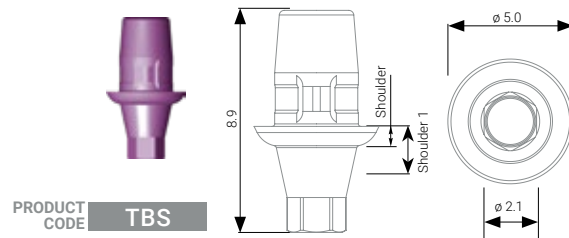


PROSTHETICS FOR CAD/CAM

Standard platform

Titanium Base for Cerec

DIAMETER	5.0 mm
FUNCTIONAL LENGTH	4.65 mm
SHOULDER	1 mm



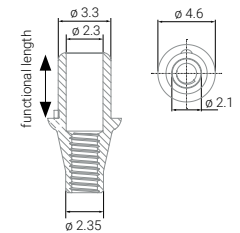
MATERIAL
Titanium Grade 5

Titanium platform CAD/CAM

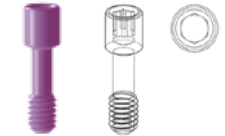
for standard platform (2.1 mm)

	Non Hex				
PRODUCT CODE	TPS-NH	TPS	TPS1	TPS2	TPS3
DIAMETER	4.6 mm	4.6 mm	4.6 mm	4.6 mm	4.6 mm
FUNCTIONAL LENGTH	4.1 mm	4.1 mm	4.1 mm	4.1 mm	4.1 mm
SHOULDER	0.5 mm	0.5 mm	1 mm	2 mm	3 mm
SHOULDER 1	1.3 mm	1.3 mm	2.3 mm	3.3 mm	4.3 mm

MATERIAL
Titanium Grade 5



Each platform set includes:

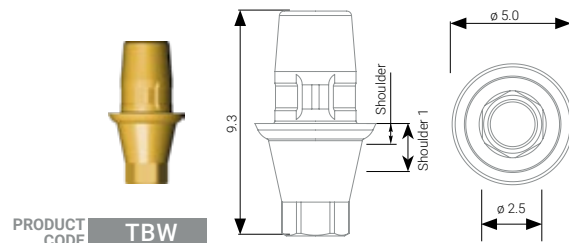


PROSTHETIC SCREW

Wide platform

Titanium Base for Cerec

DIAMETER	5.0 mm
FUNCTIONAL LENGTH	4.65 mm
SHOULDER	1 mm



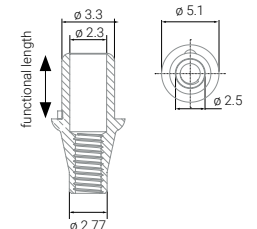
MATERIAL
Titanium Grade 5

Titanium platform CAD/CAM

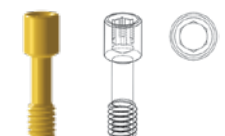
for wide platform (2.5 mm)

	Non Hex				
PRODUCT CODE	TPB-NH	TPB	TPB1	TPB2	TPB3
DIAMETER	5.1 mm	5.1 mm	5.1 mm	5.1 mm	5.1 mm
FUNCTIONAL LENGTH	4.05 mm	4.1 mm	4.1 mm	4.1 mm	4.1 mm
SHOULDER	0.5 mm	0.5 mm	1 mm	2 mm	3 mm
SHOULDER 1	1.3 mm	1.3 mm	2.3 mm	3.3 mm	4.3 mm

MATERIAL
Titanium Grade 5



Each platform set includes:

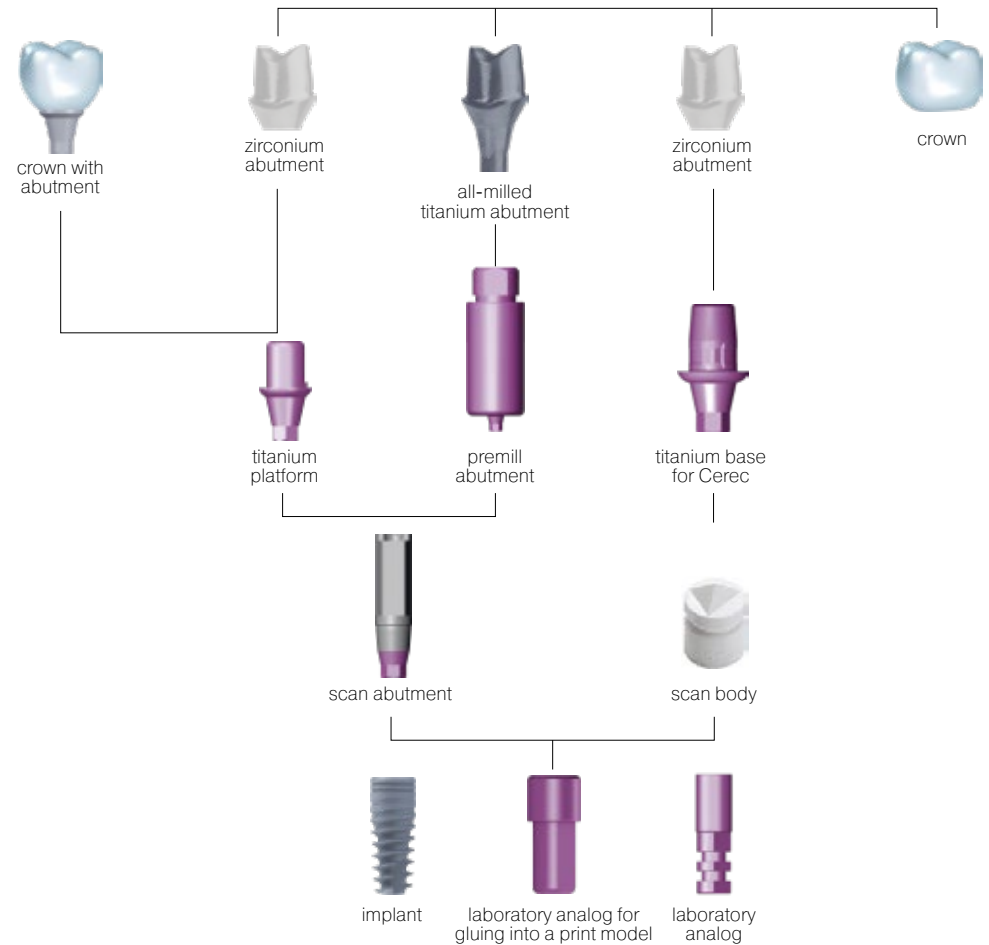


PROSTHETIC SCREW

DIGITAL PROTOCOL FOR CREATING AN ORTHOPEDIC STRUCTURE



Home page bio3-implants.com
contains the following libraries available for download
Exocad libraries, 3SHAPE libraries

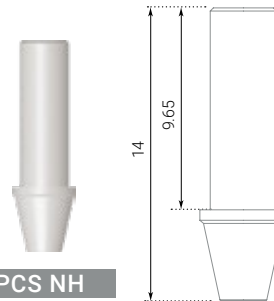


BURNED-OUT ABUTMENTS

Standard platform

DIAMETER	4.2 mm
LENGTH	14 mm

**Plastic Cylinder
Abutment**
Non Hex

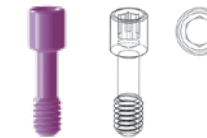


PCS NH

MATERIAL
Burned out plastic



Each abutment set includes:



PROSTHETIC SCREW

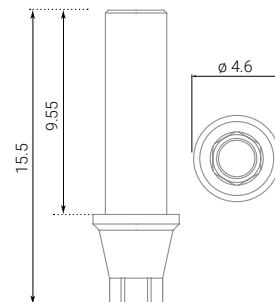
Wide platform

DIAMETER	4.6 mm
LENGTH	15.5 mm

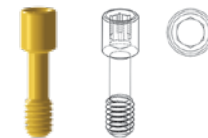
**Burned-out
abutment**
for standard
platform (2.5 mm)
is intended for
individual
orthopedic
constructions.

PRODUCT
CODE

PCB



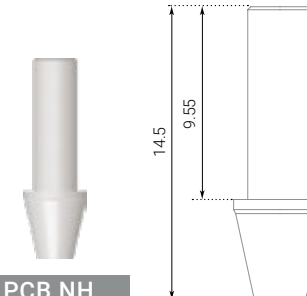
Each abutment set includes:



PROSTHETIC SCREW

DIAMETER	4.6 mm
LENGTH	14.5 mm

**Plastic Cylinder
Abutment**
Non Hex

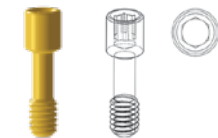


PCB NH

MATERIAL
Burned out plastic



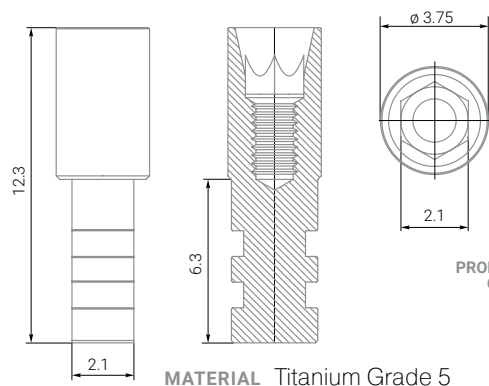
Each abutment set includes:



PROSTHETIC SCREW

LABORATORY ANALOGS

STANDART PLATFORM

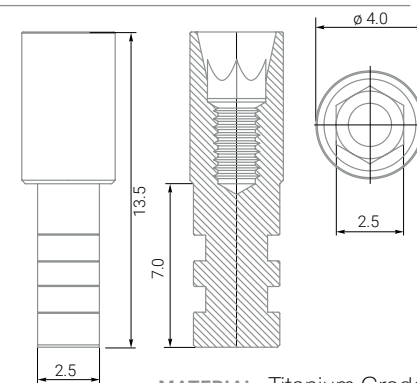


PRODUCT CODE

IAS

DIAMETER 3.75 mm
LENGTH 12.3 mm

WIDE PLATFORM



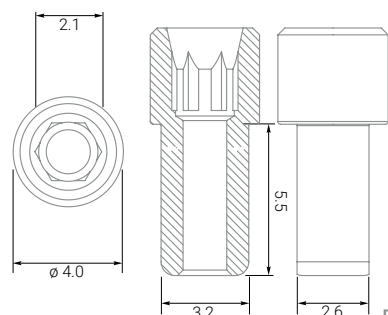
IAB

DIAMETER 4.0 mm
LENGTH 13.5 mm

Laboratory Implant Analog for standard platform (2.1 mm) as well as for wide platform (2.5 mm). It is used in laboratory modeling.

DIGITAL ANALOGS

STANDART PLATFORM

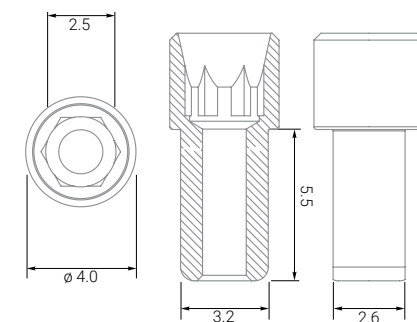


PRODUCT CODE

D-IAS

DIAMETER 4.0 mm
LENGTH 9 mm

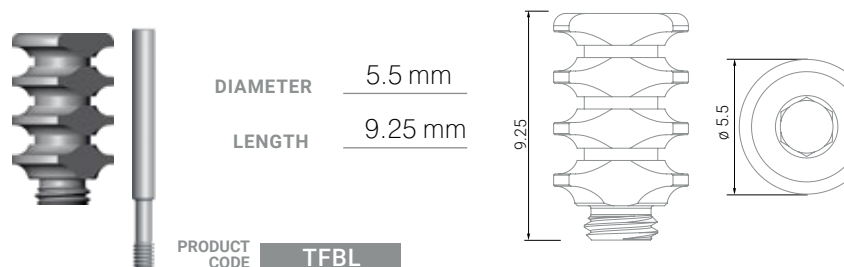
WIDE PLATFORM



D-IAB

DIAMETER 4.0 mm
LENGTH 9 mm

TRANSFER FOR Bio LINE



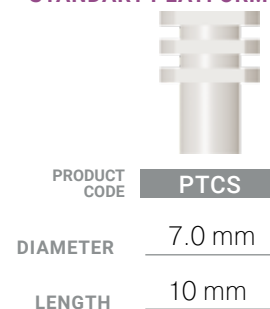
PRODUCT CODE

TFBL

DIAMETER 5.5 mm
LENGTH 9.25 mm

PLASTIC TRANSFER-CAP

STANDART PLATFORM



PRODUCT CODE

PTCS

DIAMETER 7.0 mm
LENGTH 10 mm

WIDE PLATFORM



PRODUCT CODE

PTCB

DIAMETER 8.0 mm
LENGTH 10 mm

IMPRESSION TRANSFERS FOR OPEN TRAY

Impression Suprastructures

	STANDART PLATFORM	WIDE PLATFORM
DIAMETER	4.2 mm	5.1 mm
LENGTH	17.85 mm	18.45 mm

MATERIAL Titanium Grade 5

PRODUCT CODE **SOLS15**

PRODUCT CODE **SOLB15**

Each transfers set includes:

SCREW SFT22

IMPRESSION TRANSFERS FOR CLOSED TRAY

	STANDART PLATFORM	WIDE PLATFORM
DIAMETER	4.2 mm	5.1 mm
LENGTH	13.75 mm	14.35 mm

MATERIAL Titanium Grade 5

PRODUCT CODE **SGLS9**

PRODUCT CODE **SGLB9**

Each transfers set includes:

SCREW SFT17

INSTRUCTIONS FOR Bio LINE

An exclusive product: prosthetics Bio Line repeats the natural shape of teeth at the level of gums, which allows to form an anatomically correct gingival line.

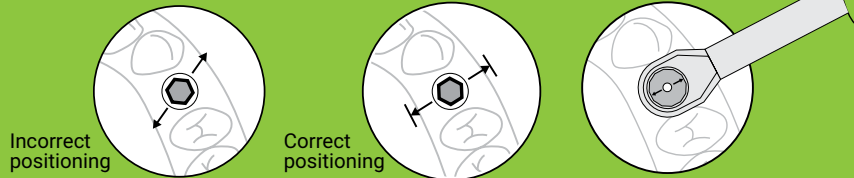
Unlike conventional suprastructures, which are circular in cross section, Bio Line product range is characterized by a natural anatomical shape, which is different for various types of teeth - incisors, canines, premolars and molars.

For convenience and correctness of the positioning of the structure (implant and suprastructures), an arrow is marked on the surface of an adapter for an implant driver. Control of the direction of this arrow guarantees the desired position of the internal hex of the implant for the correct installation of the suprastructures.



Correct installation of a Bio3 implant

1. Insert an implant using an implant driver into the bone bed and manually or using a machine implant driver tighten it clockwise until it stops;
2. Remove implant driver by pulling it straight up with little effort;
3. Finish implant installation with a help of a torque wrench with a force of 30 N/cm;
4. Make sure that an arrow on the surface of an adapter of implant driver is directed outward perpendicular to the alveolar ridge;
5. Make sure there are no bone fragments and soft tissue on the implant platform and on its inner surface;
6. Install the implant plug with a universal wrench;
7. Sew soft tissue.



Anatomical formation of soft tissues using Bio Line products

8. Perform a gum incision along the top of the alveolar ridge above the implant or use a tissue punch (mucotome) to open the implant plug;
9. In case of invasion of excess bone above the implant surface, remove it, freeing the horizontal surface of the implant;
10. Remove the plug;
11. Choose a healing cap from Bio Line product range according to the thickness of mucosa.
12. Depending on the type of a tooth, Bio Line range includes healing caps of 4 forms for:
 - incisors • canines • premolars • molars;
13. Install and fix the required Bio Line healing cap into the internal hex of the implant using a universal wrench;

Attention! For convenience and correct installation of the Bio Line healing cap, the arrow is marked on the surface of an adapter. When installing, make sure that this arrow is directed outward perpendicular to the alveolar ridge. This way, you can guarantee the correct position of the healing cap and further a Bio Line abutment in the internal hex of the implant, which will allow you to achieve maximum aesthetics.

14. Fix the healing cap with an orthopedic screw (included into the kit);

15. Perform necessary manipulations with soft tissue;

Installation of transfer and impression taking

16. Remove the healing cap with a universal or manual orthopedic wrench;
17. Set the open tray transfer to the implant for taking an impression;
18. Fill impression tray with impression material;
19. Place the impression tray into the patient's oral cavity and wait until the mass hardens;
20. Remove the impression with transfers;
21. Transfer the impression to the laboratory for making a crown;
22. Reinstall the healing cap till the crown is manufactured;

Installation of Bio Line anatomic abutment

23. Remove the healing abutment using the universal orthopedic wrench;
24. Depending on the type of a tooth, select the appropriate Bio Line abutment, identical to the shape of a natural tooth for:

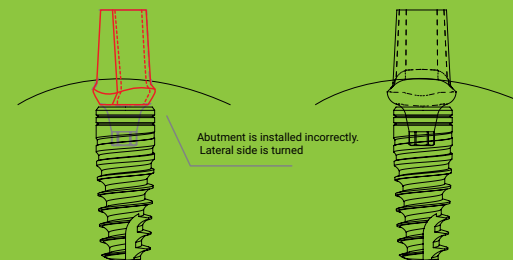
- incisors • canines • premolars • molars;

Attention! For convenience and correct installation of the Bio Line anatomical abutment, an arrow is marked on the surface of the adapter. When installing, make sure that this arrow is perpendicular to the alveolar ridge. This way, you can ensure the correct position of the Bio Line abutment in the internal hex of the implant.

25. Install a ready-made orthopedic construction into the implant bed;
26. Fix the entire structure using an orthopedic screw that is included in the kit;
27. Close the remaining hole with composite material.

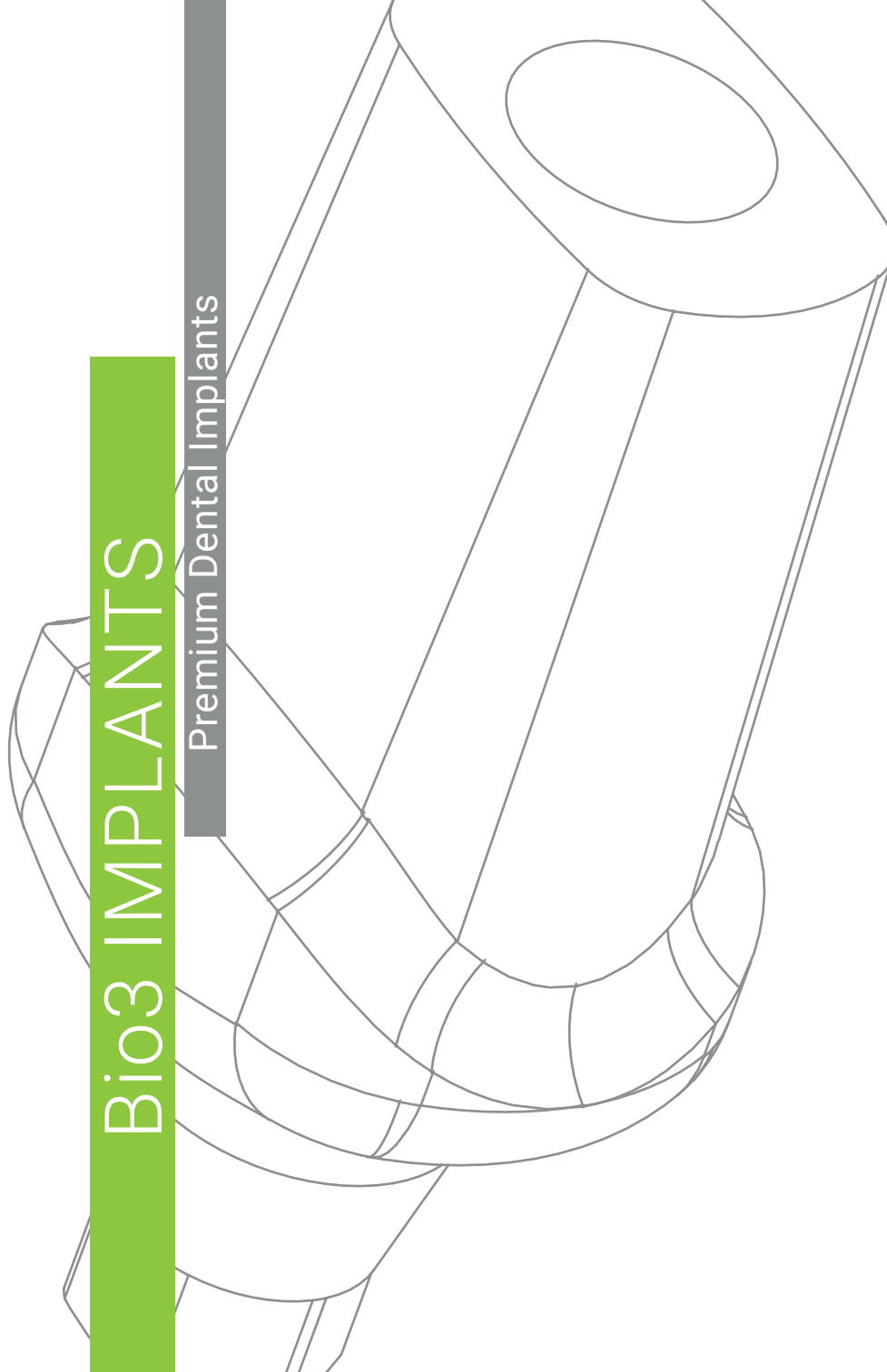
Let's highlight the main benefits of using Bio Line unique prosthetics:

- Anatomically correct restoration of the gingival line, as well as the chewing function,
- Absence of additional surgery for gingival plastics,
- Restoration of the beautiful aesthetics, appearance, and feeling of the patient as if having a natural tooth.



Bio3 IMPLANTS

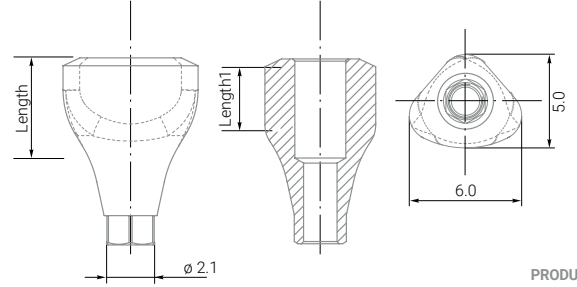
Premium Dental Implants



Bio LINE

HEALING CAPS, INCISOR TYPE

Standard platform



PRODUCT CODE



GFIS 2.25



GFIS 4.0

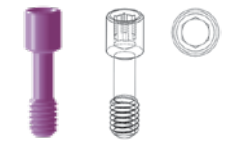
WIDTH 1	5.0 mm	5.0 mm
WIDTH 2	6.0 mm	6.0 mm
LENGTH	4.1 mm	5.95 mm
LENGTH 1	2.25 mm	4.0 mm

Anatomic design. Formation of constant anatomic gingival volume. Identical to natural incisor form. No need for soft tissue transplantation after the implantation or tooth removal. It is installed using universal or hand prosthetic insertion driver. For standard platform (2.1 mm). Prosthetic screw in each set.

MATERIAL Titanium Grade 5

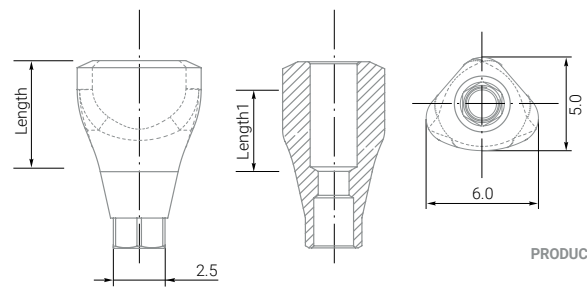
INTERNAL HEX
2.1

Each abutment set includes:



PROSTHETIC SCREW

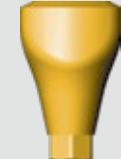
Wide platform



PRODUCT CODE



GFIB 2.25



GFIB 4.0

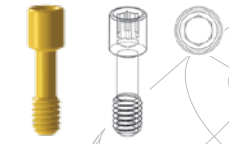
WIDTH 1	5.0 mm	5.0 mm
WIDTH 2	6.0 mm	6.0 mm
LENGTH	4.5 mm	6.35 mm
LENGTH 1	2.25 mm	4.0 mm

Anatomic design. Formation of constant anatomic gingival volume. Identical to natural incisor form. No need for soft tissue transplantation after the implantation or tooth removal. It is installed using universal or hand prosthetic insertion driver. For wide platform (2.5 mm). Prosthetic screw in each set.

MATERIAL Titanium Grade 5

INTERNAL HEX
2.5

Each abutment set includes:



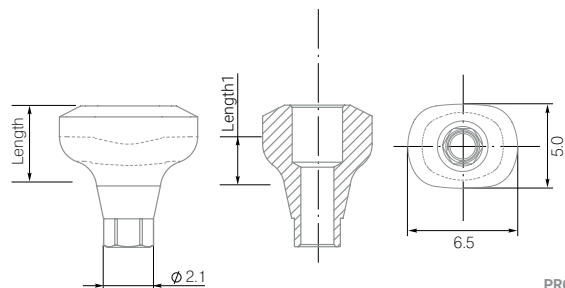
PROSTHETIC SCREW

HEALING CAPS, CANINE TYPE

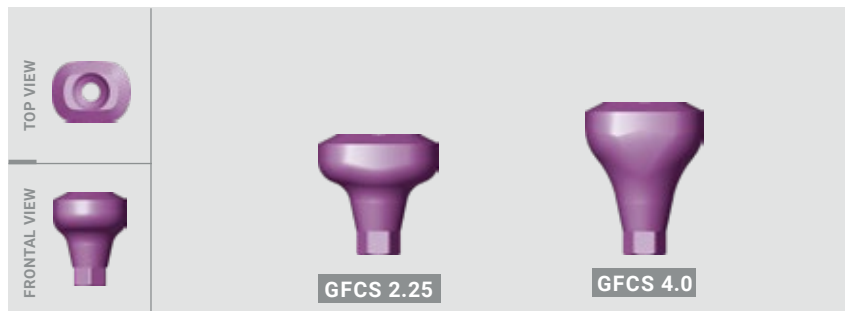
Standard platform

INTERNAL HEX

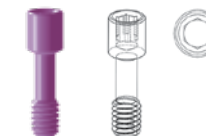
2.1



PRODUCT CODE



Each abutment set includes:



PROSTHETIC SCREW

WIDTH 1	5.0 mm	5.0 mm
WIDTH 2	6.5 mm	6.5 mm
LENGTH	4.1 mm	5.95 mm
LENGTH 1	2.25 mm	4.0 mm

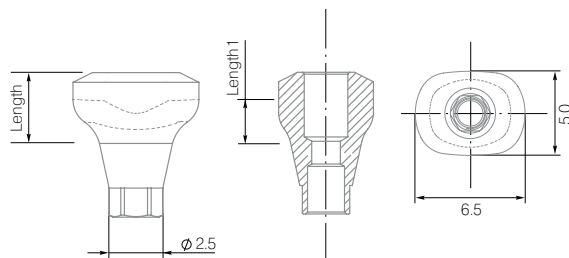
Anatomic design. Formation of constant anatomic gingival volume. Identical to natural canine form. No need for soft tissue transplantation after the implantation or tooth removal. It is installed using universal or hand prosthetic insertion driver. For standard platform (2.1 mm). Prosthetic screw in each set.

MATERIAL Titanium Grade 5

Wide platform

INTERNAL HEX

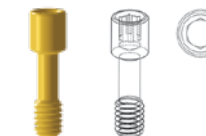
2.5



PRODUCT CODE



Each abutment set includes:



PROSTHETIC SCREW

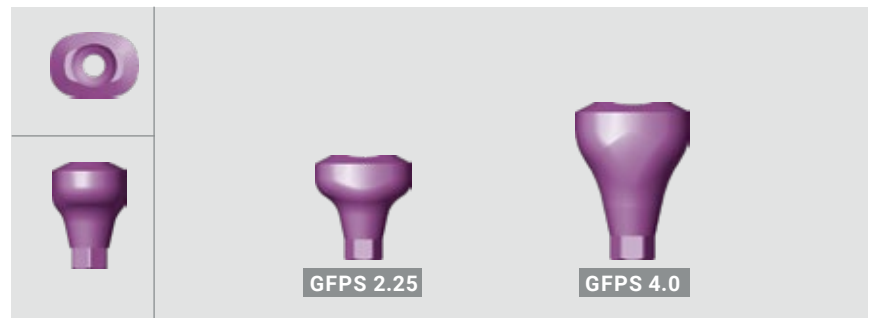
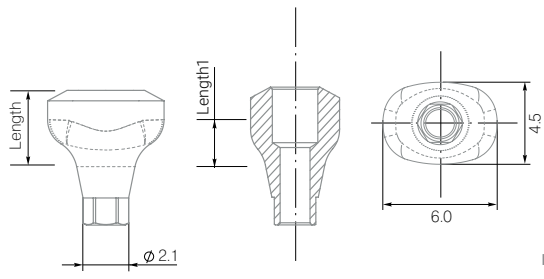
WIDTH 1	5.0 mm	5.0 mm
WIDTH 2	6.5 mm	6.5 mm
LENGTH	4.5 mm	6.35 mm
LENGTH 1	2.25 mm	4.0 mm

Anatomic design. Formation of constant anatomic gingival volume. Identical to natural canine form. No need for soft tissue transplantation after the implantation or tooth removal. It is installed using universal or hand prosthetic insertion driver. For wide platform (2.5 mm). Prosthetic screw in each set.

MATERIAL Titanium Grade 5

HEALING CAPS, PREMOLAR TYPE

Standard platform

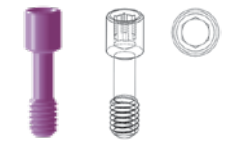


PRODUCT CODE

WIDTH 1	4.5 mm	4.5 mm
WIDTH 2	6.0 mm	6.0 mm
LENGTH	4.1 mm	5.95 mm
LENGTH 1	2.25 mm	4.0 mm

INTERNAL HEX
2.1

Each abutment set includes:

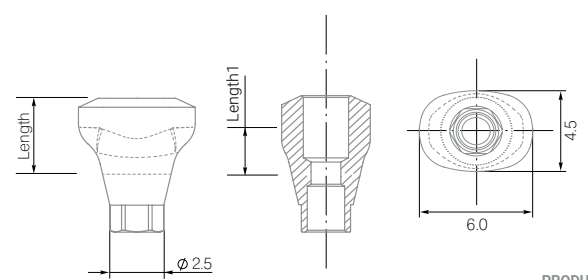


PROSTHETIC SCREW

Anatomic design. Formation of constant anatomic gingival volume. Identical to natural premolar form. No need for soft tissue transplantation after the implantation or tooth removal. It is installed using universal or hand prosthetic insertion driver. For standard platform (2.1 mm). Prosthetic screw in each set.

MATERIAL Titanium Grade 5

Wide platform

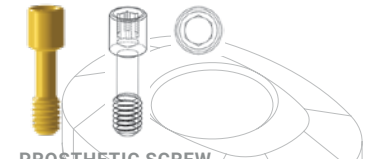


PRODUCT CODE

WIDTH 1	4.5 mm	4.5 mm
WIDTH 2	6.0 mm	6.0 mm
LENGTH	4.5 mm	6.35 mm
LENGTH 1	2.25 mm	4.0 mm

INTERNAL HEX
2.5

Each abutment set includes:



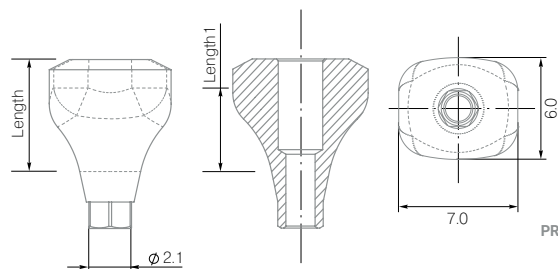
PROSTHETIC SCREW

Anatomic design. Formation of constant anatomic gingival volume. Identical to natural premolar form. No need for soft tissue transplantation after the implantation or tooth removal. It is installed using universal or hand prosthetic insertion driver. For wide platform (2.5 mm). Prosthetic screw in each set.

MATERIAL Titanium Grade 5

HEALING CAPS, MOLAR TYPE

Standard platform



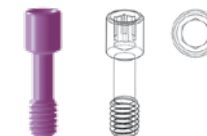
PRODUCT CODE



INTERNAL HEX

2.1

Each abutment set includes:



PROSTHETIC SCREW

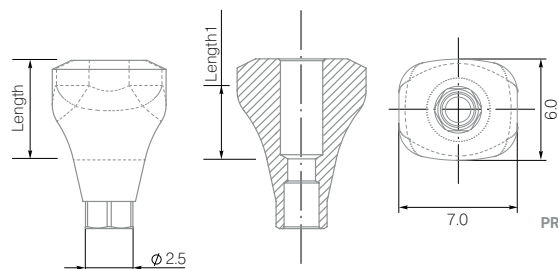
WIDTH 1	6.0 mm	6.0 mm
WIDTH 2	7.0 mm	7.0 mm
LENGTH	4.1 mm	5.95 mm
LENGTH 1	2.25 mm	4.0 mm

Anatomic design. Formation of constant anatomic gingival volume.

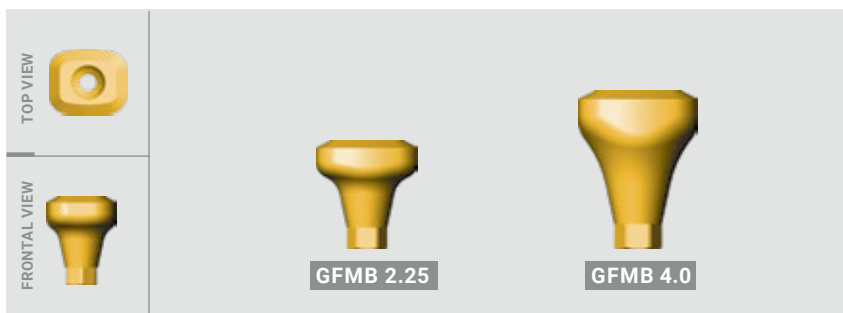
Identical to natural molar form. No need for soft tissue transplantation after the implantation or tooth removal. It is installed using universal or hand prosthetic insertion driver. For standard platform (2.1 mm). Prosthetic screw in each set.

MATERIAL Titanium Grade 5

Wide platform



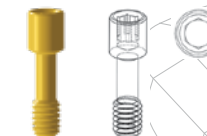
PRODUCT CODE



INTERNAL HEX

2.5

Each abutment set includes:



PROSTHETIC SCREW

WIDTH 1	6.0 mm	6.0 mm
WIDTH 2	7.0 mm	7.0 mm
LENGTH	4.5 mm	6.35 mm
LENGTH 1	2.25 mm	4.0 mm

Anatomic design. Formation of constant anatomic gingival volume.

Identical to natural molar form. No need for soft tissue transplantation after the implantation or tooth removal.

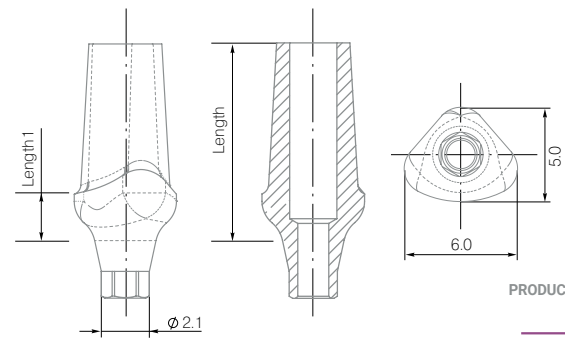
It is installed using universal or hand prosthetic insertion driver. For wide platform (2.5 mm).

Prosthetic screw in each set.

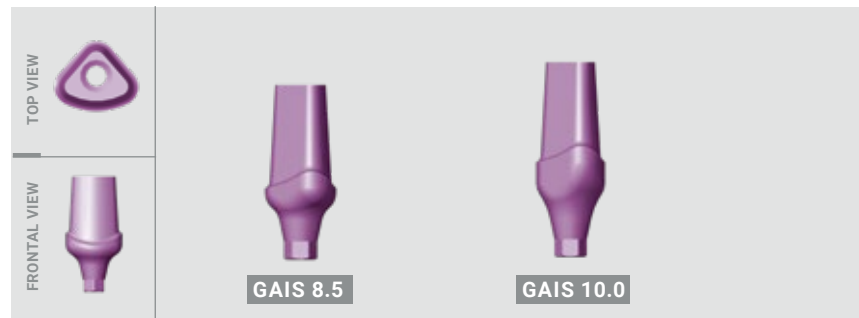
MATERIAL Titanium Grade 5

STRAIGHT ABUTMENTS, INCISOR TYPE

Standard platform



PRODUCT CODE



WIDTH 1	5.0 mm	5.0 mm
WIDTH 2	6.0 mm	6.0 mm
LENGTH	10.0 mm	11.85 mm
LENGTH 1	2.7 mm	4.5 mm

Biological construction identical to natural incisor form. Wide range of shapes, heights and shoulders. Scalloped edges comply with the contour of gingival margin. It is installed using universal or hand prosthetic insertion driver. For standard platform (2.1 mm). Prosthetic screw in each set.

MATERIAL Titanium Grade 5

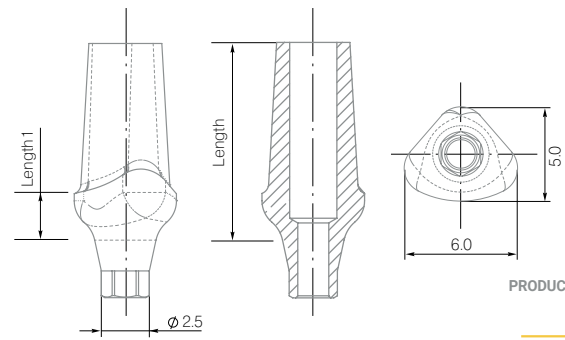
INTERNAL HEX
2.1

Each abutment set includes:



PROSTHETIC SCREW

Wide platform



PRODUCT CODE



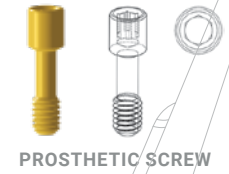
WIDTH 1	4.5 mm	4.5 mm
WIDTH 2	6.0 mm	6.0 mm
LENGTH	10.40 mm	11.85 mm
LENGTH 1	3.10 mm	5.0 mm

Biological construction identical to natural incisor form. Wide range of shapes, heights and shoulders. Scalloped edges comply with the contour of gingival margin. It is installed using universal or hand prosthetic insertion driver. For wide platform (2.5 mm). Prosthetic screw in each set.

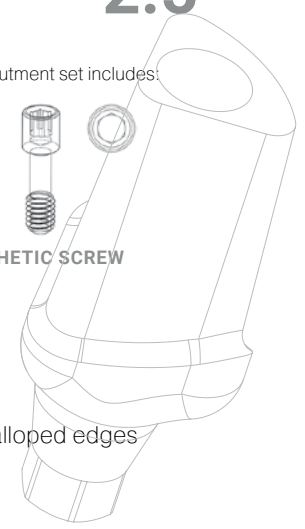
MATERIAL Titanium Grade 5

INTERNAL HEX
2.5

Each abutment set includes:

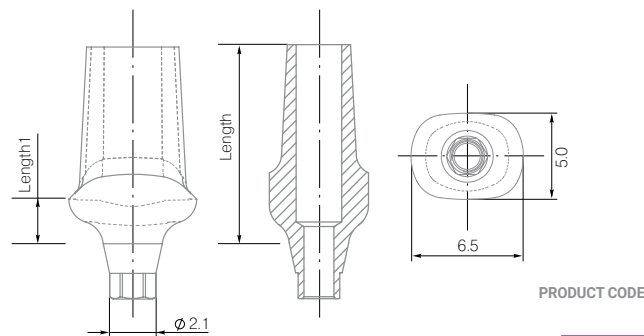


PROSTHETIC SCREW



STRAIGHT ABUTMENTS, CANINE TYPE

Standard platform



INTERNAL HEX
2.1

Each abutment set includes:

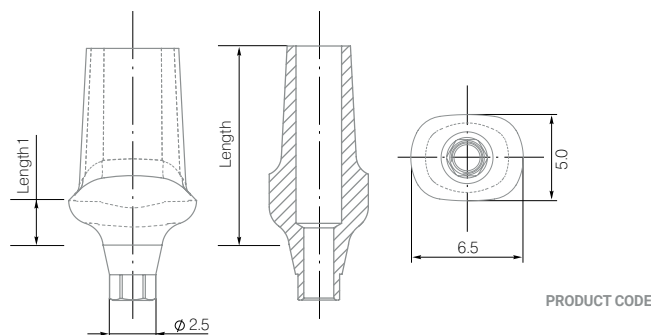


WIDTH 1	5.0 mm	5.0 mm
WIDTH 2	6.5 mm	6.5 mm
LENGTH	10.4 mm	12.25 mm
LENGTH 1	2.7 mm	4.5 mm

Biological construction identical to natural canine form. Wide range of shapes, heights and shoulders. Scalloped edges comply with the contour of gingival margin. It is installed using universal or hand prosthetic insertion driver. For standard platform (2.1 mm). Prosthetic screw in each set.

MATERIAL Titanium Grade 5

Wide platform



INTERNAL HEX
2.5

Each abutment set includes:



WIDTH 1	5.0 mm	5.0 mm
WIDTH 2	6.5 mm	6.5 mm
LENGTH	10.80 mm	12.65 mm
LENGTH 1	3.10 mm	5.0 mm

Biological construction identical to natural canine form. Wide range of shapes, heights and shoulders. Scalloped edges comply with the contour of gingival margin. It is installed using universal or hand prosthetic insertion driver. For wide platform (2.5 mm). Prosthetic screw in each set.

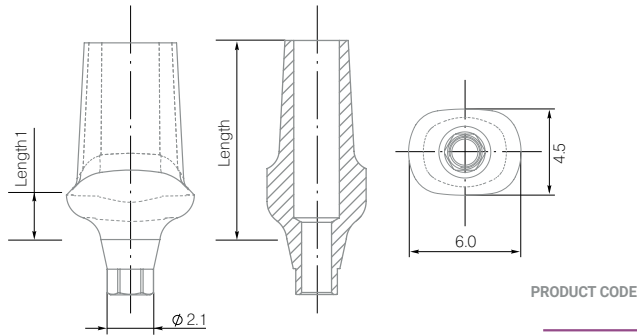
MATERIAL Titanium Grade 5

STRAIGHT ABUTMENTS, PREMOLAR TYPE

Standard platform

INTERNAL HEX
2.1

Each abutment set includes:



WIDTH 1	4.5 mm	4.5 mm
WIDTH 2	6.0 mm	6.0 mm
LENGTH	10.4 mm	12.25 mm
LENGTH 1	2.7 mm	4.5 mm

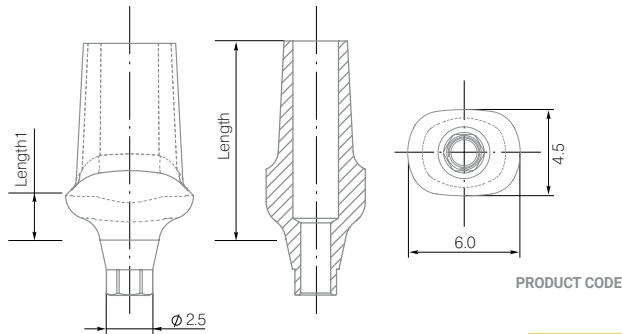
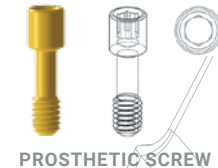
Biological construction identical to natural premolar form. Wide range of shapes, heights and shoulders. Scalloped edges comply with the contour of gingival margin. It is installed using universal or hand prosthetic insertion driver. For standard platform (2.1 mm). Prosthetic screw in each set.

MATERIAL Titanium Grade 5

Wide platform

INTERNAL HEX
2.5

Each abutment set includes:



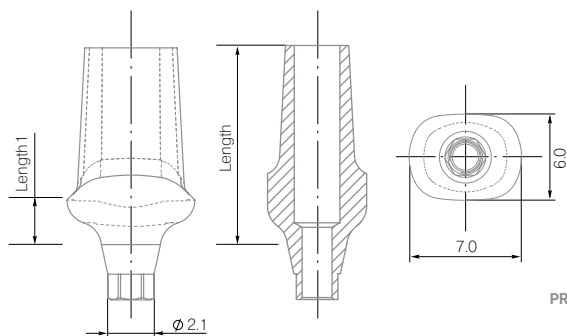
WIDTH 1	4.5 mm	4.5 mm
WIDTH 2	6.0 mm	6.0 mm
LENGTH	10.8 mm	12.65 mm
LENGTH 1	3.10 mm	5.0 mm

Biological construction identical to natural premolar form. Wide range of shapes, heights and shoulders. Scalloped edges comply with the contour of gingival margin. It is installed using universal or hand prosthetic insertion driver. For wide platform (2.5 mm). Prosthetic screw in each set.

MATERIAL Titanium Grade 5

STRAIGHT ABUTMENTS, MOLAR TYPE

Standard platform



PRODUCT CODE



WIDTH 1	6.0 mm	6.0 mm
WIDTH 2	7.0 mm	7.0 mm
LENGTH	9.0 mm	10.85 mm
LENGTH 1	2.7 mm	4.5 mm

Biological construction identical to natural molar form. Wide range of shapes, heights and shoulders. Scalloped edges comply with the contour of gingival margin. It is installed using universal or hand prosthetic insertion driver. For standard platform (2.1 mm). Prosthetic screw in each set.

MATERIAL Titanium Grade 5

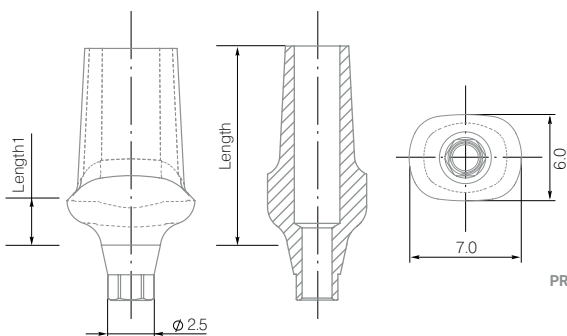
INTERNAL HEX
2.1

Each abutment set includes:



PROSTHETIC SCREW

Wide platform



PRODUCT CODE



WIDTH 1	6.0 mm	6.0 mm
WIDTH 2	7.0 mm	7.0 mm
LENGTH	9.40 mm	11.25 mm
LENGTH 1	3.10 mm	5.0 mm

Biological construction identical to natural molar form. Wide range of shapes, heights and shoulders. Scalloped edges comply with the contour of gingival margin. It is installed using universal or hand prosthetic insertion driver. For wide platform (2.5 mm). Prosthetic screw in each set.

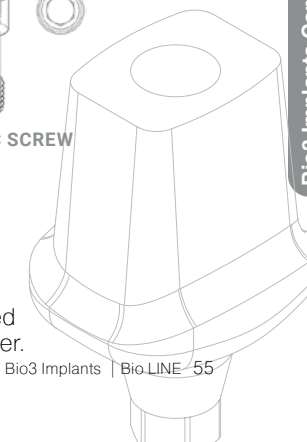
MATERIAL Titanium Grade 5

INTERNAL HEX
2.5

Each abutment set includes:



PROSTHETIC SCREW



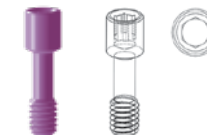
ANGULATED ABUTMENTS INCISOR TYPE 15° / 25°

Standard platform

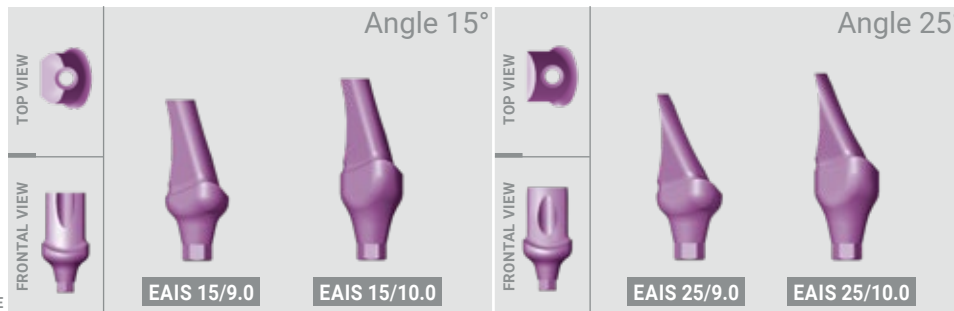
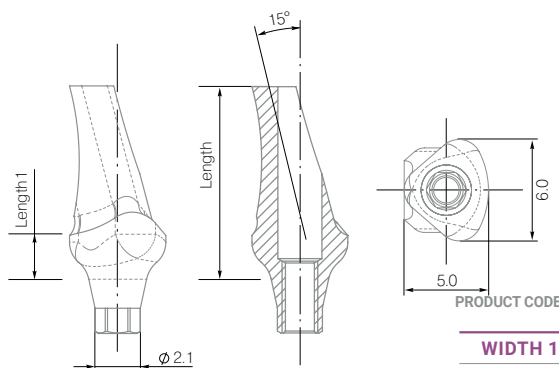
INTERNAL HEX

2.1

Each abutment set includes:



PROSTHETIC SCREW



WIDTH 1	5.0 mm	5.0 mm	5.0 mm	5.0 mm
WIDTH 2	6.0 mm	6.0 mm	6.0 mm	6.0 mm
LENGTH	10.4 mm	12.25 mm	10.4 mm	12.25 mm
LENGTH 1	2.7 mm	4.5 mm	2.7 mm	4.5 mm

Angulated anatomic abutment, incisor type is recommended in case when the implants are installed at 15° or 25° angle. It is installed using universal or hand prosthetic insertion driver. For standard platform (2.1 mm). Prosthetic screw in each set.

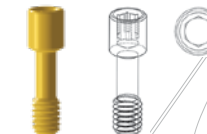
MATERIAL Titanium Grade 5

Wide platform

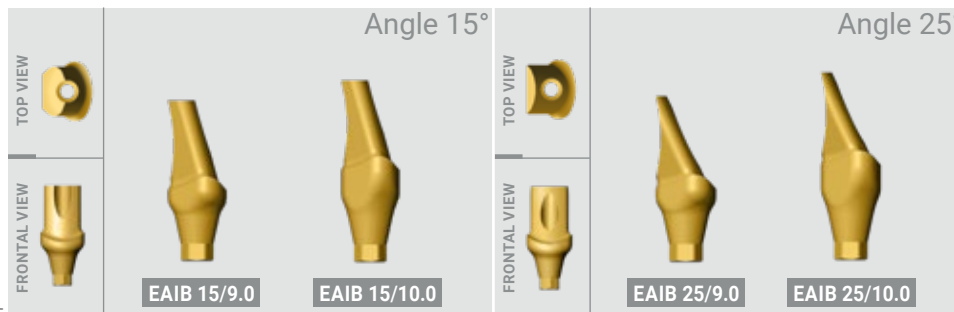
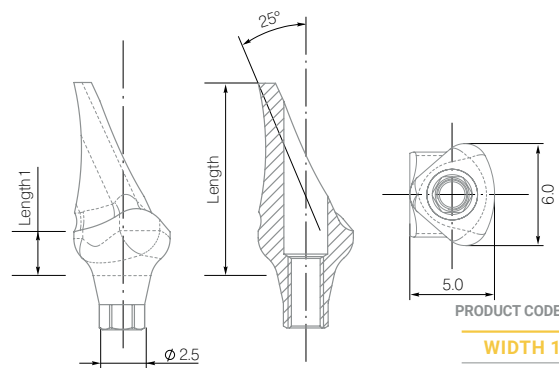
INTERNAL HEX

2.5

Each abutment set includes:



PROSTHETIC SCREW



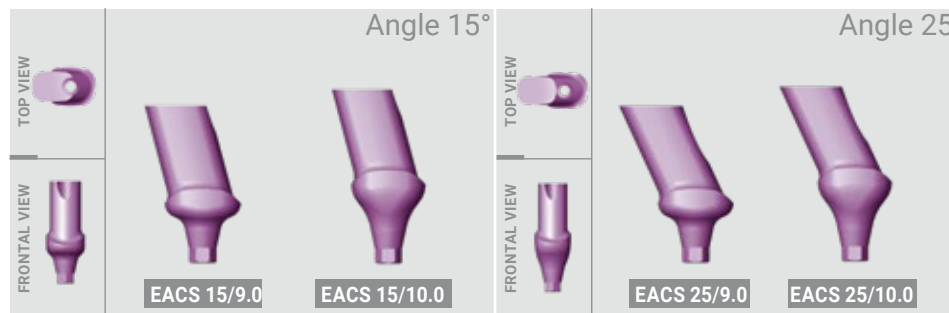
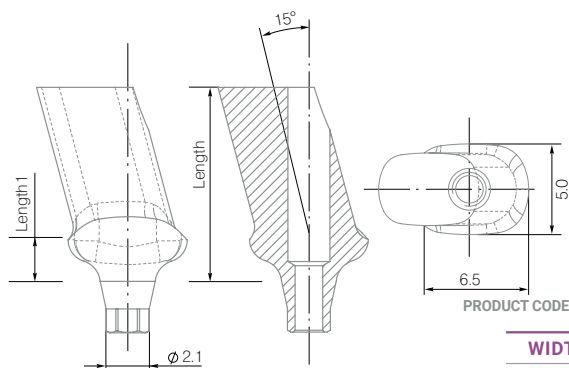
WIDTH 1	5.0 mm	5.0 mm	5.0 mm	5.0 mm
WIDTH 2	6.0 mm	6.0 mm	6.0 mm	6.0 mm
LENGTH	10.80 mm	12.65 mm	10.80 mm	12.65 mm
LENGTH 1	3.1 mm	5.0 mm	3.1 mm	5.0 mm

Angulated anatomic abutment, incisor type is recommended in case when the implants are installed at 15° or 25° angle. It is installed using universal or hand prosthetic insertion driver. For wide platform (2.5 mm). Prosthetic screw in each set.

MATERIAL Titanium Grade 5

ANGULATED ABUTMENTS CANINE TYPE 15° / 25°

Standard platform



WIDTH 1	5.0 mm	5.0 mm	5.0 mm	5.0 mm
WIDTH 2	6.5 mm	6.5 mm	6.5 mm	6.5 mm
LENGTH	11.0 mm	12.85 mm	11.0 mm	12.85 mm
LENGTH 1	2.7 mm	4.5 mm	2.7 mm	4.5 mm

Angulated anatomic abutment, canine type is recommended in case when the implants are installed at 15° or 25° angle. It is installed using universal or hand prosthetic insertion driver. For standard platform (2.1 mm). Prosthetic screw in each set.

MATERIAL Titanium Grade 5

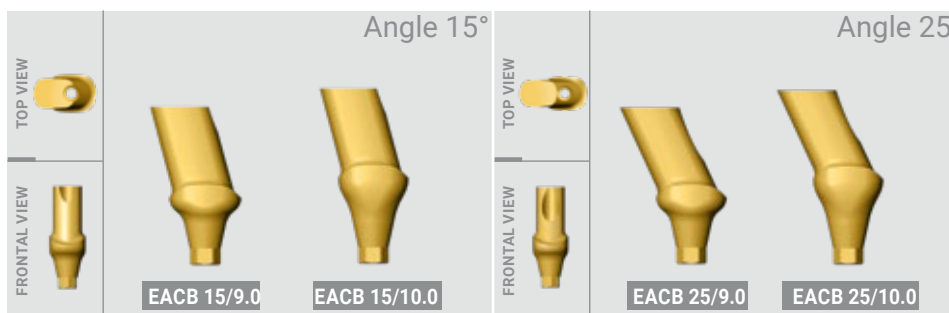
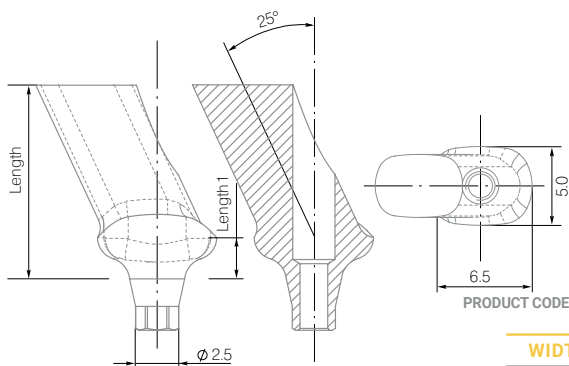
INTERNAL HEX
2.1

Each abutment set includes:



PROSTHETIC SCREW

Wide platform



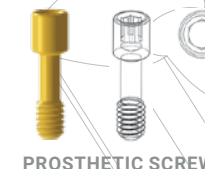
WIDTH 1	5.0 mm	5.0 mm	5.0 mm	5.0 mm
WIDTH 2	6.5 mm	6.5 mm	6.5 mm	6.5 mm
LENGTH	11.4 mm	13.25 mm	11.4 mm	13.25 mm
LENGTH 1	3.10 mm	5.0 mm	3.10 mm	5.0 mm

Angulated anatomic abutment, canine type is recommended in case when the implants are installed at 15° or 25° angle. It is installed using universal or hand prosthetic insertion driver. For wide platform (2.5 mm). Prosthetic screw in each set.

MATERIAL Titanium Grade 5

INTERNAL HEX
2.5

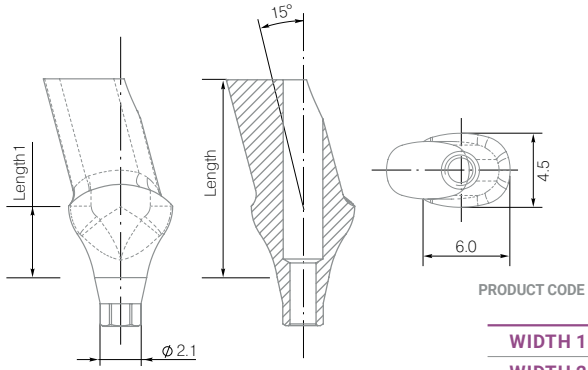
Each abutment set includes:



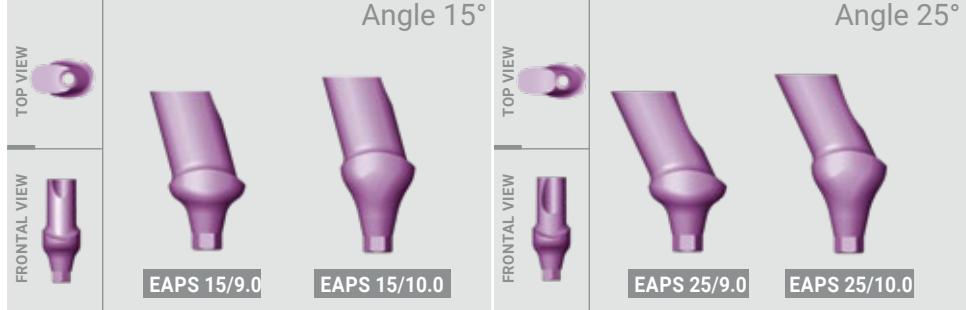
PROSTHETIC SCREW

ANGULATED ABUTMENTS PREMOLAR TYPE TYPE 15° / 25°

Standard platform



PRODUCT CODE



WIDTH 1	4.5 mm	4.5 mm	4.5 mm	4.5 mm
WIDTH 2	6.0 mm	6.0 mm	6.0 mm	6.0 mm
LENGTH	10.0 mm	11.85 mm	10.0 mm	11.85 mm
LENGTH 1	2.7 mm	4.5 mm	2.7 mm	4.5 mm

Angulated anatomic abutment, premolar type is recommended in case when the implants are installed at 15° or 25° angle. It is installed using universal or hand prosthetic insertion driver. For standard platform (2.1 mm). Prosthetic screw in each set.

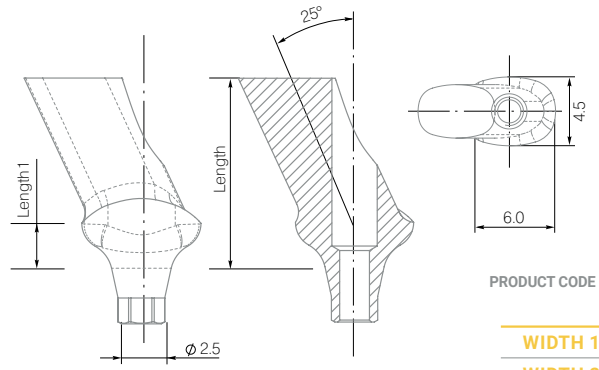
INTERNAL HEX
2.1

Each abutment set includes:

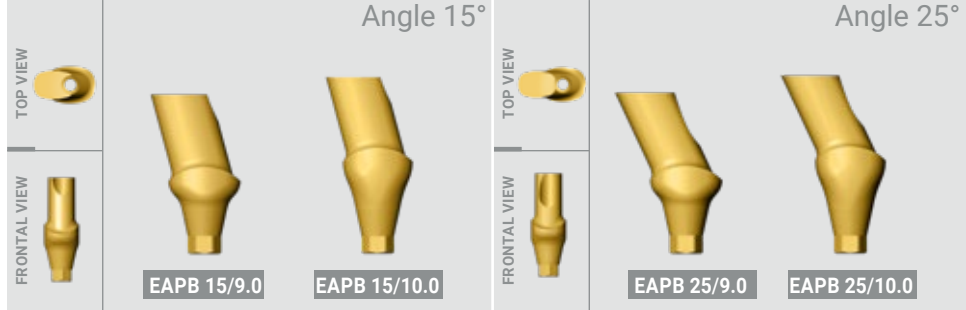


MATERIAL Titanium Grade 5

Wide platform



PRODUCT CODE

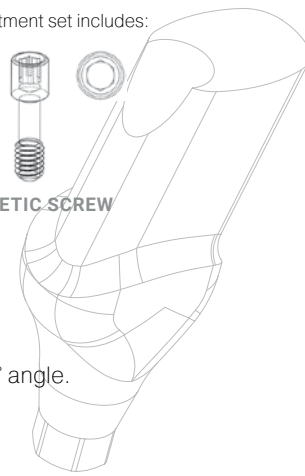
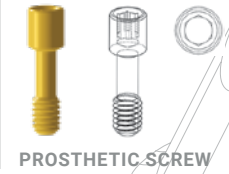


WIDTH 1	4.5 mm	4.5 mm	4.5 mm	4.5 mm
WIDTH 2	6.0 mm	6.0 mm	6.0 mm	6.0 mm
LENGTH	10.4 mm	12.25 mm	10.4 mm	12.25 mm
LENGTH 1	3.10 mm	5.0 mm	3.10 mm	5.0 mm

Angulated anatomic abutment, premolar type is recommended in case when the implants are installed at 15° or 25° angle. It is installed using universal or hand prosthetic insertion driver. For wide platform (2.5 mm). Prosthetic screw in each set.

INTERNAL HEX
2.5

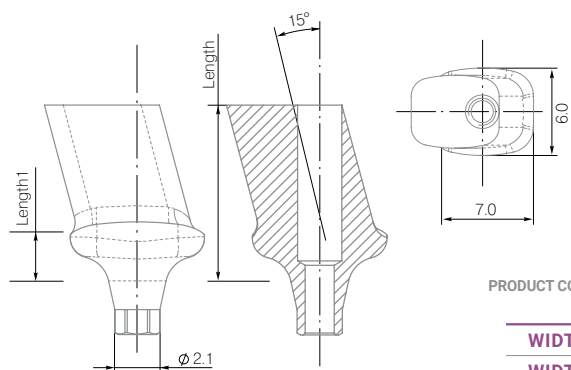
Each abutment set includes:



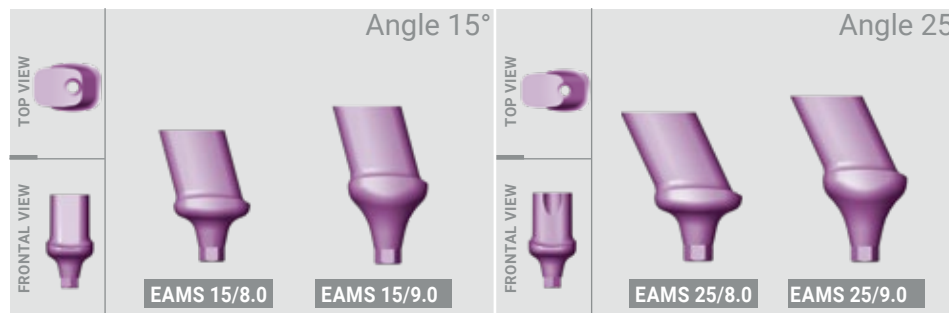
MATERIAL Titanium Grade 5

ANGULATED ABUTMENTS MOLAR TYPE 15° / 25°

Standard platform



PRODUCT CODE



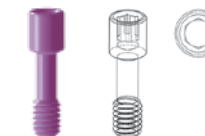
WIDTH 1	6.0 mm	6.0 mm	6.0 mm	6.0 mm
WIDTH 2	7.0 mm	7.0 mm	7.0 mm	7.0 mm
LENGTH	9.6 mm	11.45 mm	9.6 mm	11.45 mm
LENGTH 1	2.7 mm	4.5 mm	2.7 mm	4.5 mm

Angulated anatomic abutment, molar type is recommended in case when the implants are installed at 15° or 25° angle. It is installed using universal or hand prosthetic insertion driver. For standard platform (2.1 mm). Prosthetic screw in each set.

MATERIAL Titanium Grade 5

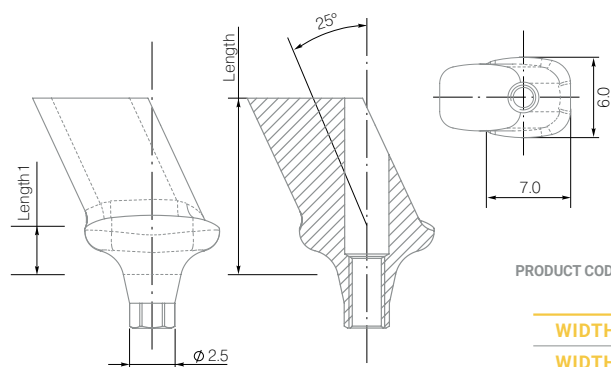
INTERNAL HEX
2.1

Each abutment set includes:

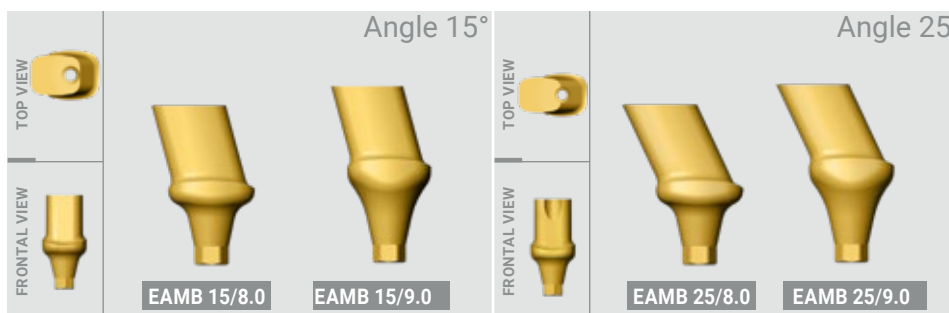


PROSTHETIC SCREW

Wide platform



PRODUCT CODE



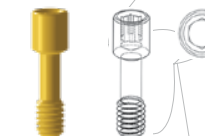
WIDTH 1	6.0 mm	6.0 mm	6.0 mm	6.0 mm
WIDTH 2	7.0 mm	7.0 mm	7.0 mm	7.0 mm
LENGTH	10.0 mm	11.85 mm	10.0 mm	11.85 mm
LENGTH 1	3.10 mm	5.0 mm	3.10 mm	5.0 mm

Angulated anatomic abutment, molar type is recommended in case when the implants are installed at 15° or 25° angle. It is installed using universal or hand prosthetic insertion driver. For wide platform (2.5 mm). Prosthetic screw in each set.

MATERIAL Titanium Grade 5

INTERNAL HEX
2.5

Each abutment set includes:



PROSTHETIC SCREW

Kits

Bio3 Implants Surgical Kit is packed in carton box.

All instruments in the kit are made of surgical steel

**WIDE
PLATFORM**



NOTE: Our drill 2.8 and stoppers 2.0 - 2.8 change color and go from red to black. During the transition period, we will deliver the red and black products to you, up to complete modification of the range.

COMPONENTS OF THE SURGICAL KIT

SURGICAL DRILLS

The conical surgical drills without internal cooling of various diameters with diamond type coating

For bone cavity formation

mm

PRODUCT CODE



MATERIAL: SURGICAL STEEL

DRILL STOPPERS

Stoppers for drills diameter – 2.0 and 2.8

For drilling depth limitation

mm

PRODUCT CODE



MATERIAL: SURGICAL STEEL

NOTE: Our drill 2.8 and stoppers 2.0 - 2.8 change color and go from red to black. During the transition period, we will deliver the red and black products to you, up to complete modification of the range.

SUPPORTING INSTRUMENTS

- 1 Profile drills
- 2 Drill extension
- 3 Parallel pin x 2
For socket direction and depth identification
- 4 Implant driver adapter
- 5 Adapter-implant drivers for range ratchet

mm

PRODUCT CODE



MATERIAL: SURGICAL STEEL

INSTRUMENTS

- 6 Universal screwdriver for screws 9 mm and 18 mm
For prosthetic screws, abutments, healing caps and implant plugs
- 7 Implant drivers 9 mm and 18 mm
- 8 Depth gauge
- 9 Range ratchet
- 10 Torque wrench adaptor, force 10/45H
*Option is not included in the set



MATERIAL: SURGICAL STEEL

Bio3 GUIDE SURGICAL KIT

Bio3 IMPLANTS

Premium Dental Implants



**STANDARD
PLATFORM**

**WIDE
PLATFORM**

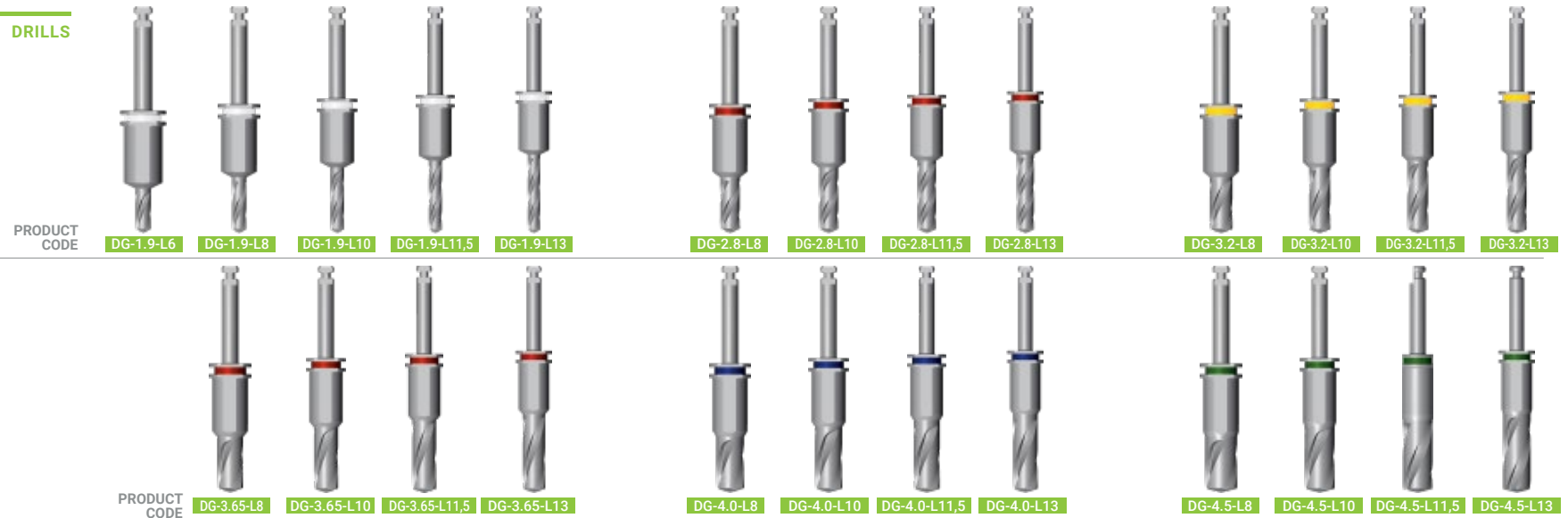


Guide Surgical Kit

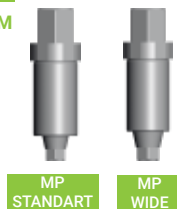
GSK

COMPONENTS OF THE SURGICAL GUIDE KIT

DRILLS



MOUNTER PLATFORM



MOUNT DRIVERS



RATCHET ADAPTOR



TISSUE PUNCH



BONE MILL

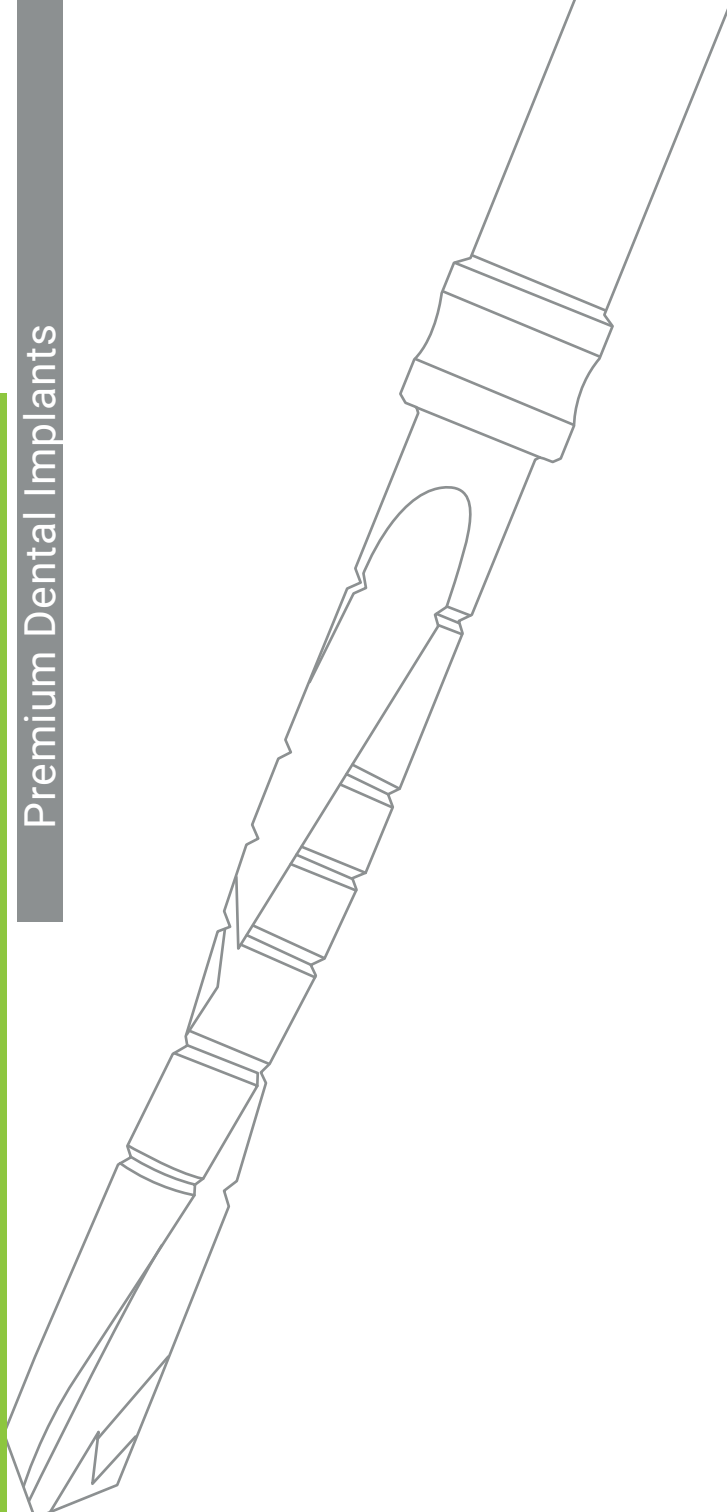


UNIVERSAL SCREWDRIVER FOR SCREWS 9 mm and 18 mm



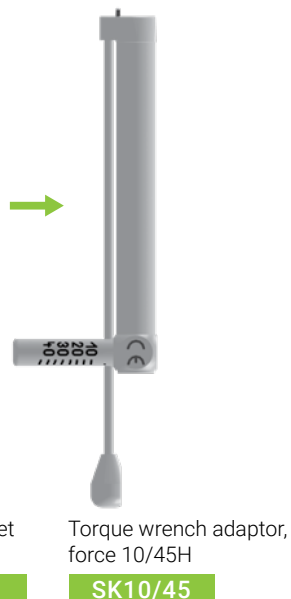
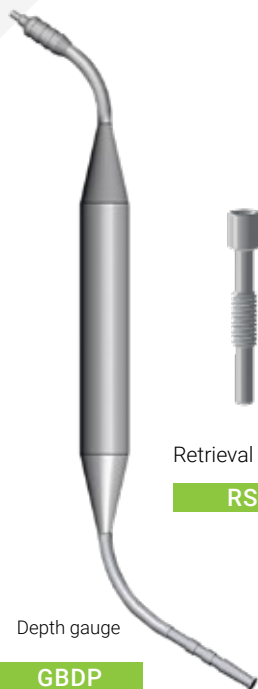
Bio3 IMPLANTS

Premium Dental Implants

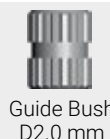


INSTRUMENTS

INSTRUMENTS



Drill guide is placed inside the prepared surgical guide and is intended for guiding of the surgical drills and implant placement.



for Surgical Guide Pilot
drilling only

IMPLANT DRIVERS

	STANDART PLATFORM		WIDE PLATFORM	
DIAMETER	2.1 mm	2.1 mm	2.5 mm	2.5 mm
LENGTH	9 mm	18 mm	9 mm	18 mm



PRODUCT CODE

IS9

IS18

IB9

IB18

Implant driver of a various length – 9 mm and 18 mm for range ratchet
MATERIAL Surgical steel

IMPLANT DRIVER ADAPTERS

	STANDART PLATFORM		WIDE PLATFORM	
DIAMETER	2.1 mm	2.1 mm	2.5 mm	2.5 mm
LENGTH	9 mm	18 mm	9 mm	18 mm



ITS9

ITS18

ITB9

ITB18

It is used for implant installation with handpiece –
9 mm and 18 mm
MATERIAL Surgical steel

ADAPTER-IMPLANT DRIVER



Adapter-implant driver
for range ratchet

AD

STOPPERS FOR PILOT DRILLS

DIAMETER 2.8 mm

Stoppers for cylinder pilot drills, diameter 2.0 and 2.8 mm



LB2.8/ 8 10 11.5 13

MATERIAL Surgical steel

DIAMETER 3.0-4.7 mm

Stoppers for drill TCS 3.0, 3.5, 3.9, 4.7, diameter 3.0-4.7 mm



LB3.0-4.7/ 8 10 11.5 13

NOTE: Our drill 2.8 and stoppers 2.0 - 2.8 change color and go from red to black. During the transition period, we will deliver the red and black products to you, up to complete modification of the range.

WRENCHES FOR SUPRASTRUCTURES

For both platforms



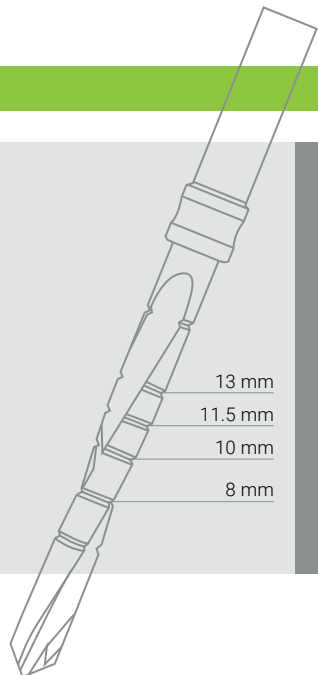
SU9 SU18

MATERIAL Surgical steel

Universal wrench of various length, 9 mm and 18 mm for prosthetic screws, implant plugs and other accessories.

SURGICAL TAPERED DRILLS

Diamond type coating



STANDARD PLATFORM

WIDE PLATFORM

MARK DRILL



TCB1.5
1.5 mm

CYLINDRICAL PILOT DRILLS



TCB2.0
2.0 mm



TCS2.8
2.8 mm

Please note:
Cutting instruments with diamond-like coating should generally be replaced after 50 autoclaving. Blunt or damaged instruments must be replaced immediately.

Surgical tapered drills of various diameters without inner cooling for conical shape bone cavity formation when bone cavity shape ideally follows implant body shape.

TAPERED DRILLS



TCS3.0
3.0 mm



TCS3.5
3.5 mm



TCS3.9
3.9 mm



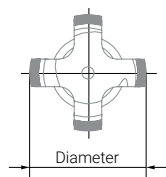
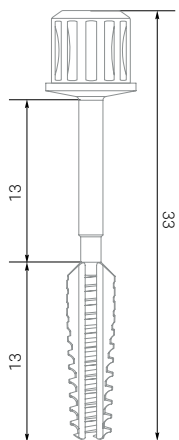
TCS4.7
4.7 mm

MATERIAL Surgical steel

Diameter

BONE TAPS FOR Bio3 PROGRESSIVE IMPLANTS

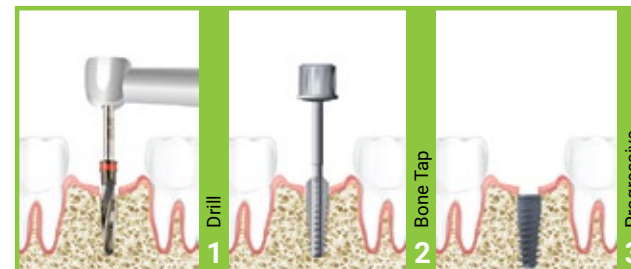
Bio3 Progressive



PRODUCT CODE



DIAMETER	3.3 mm	3.8 mm	4.2 mm	5.0 mm
LENGTH	13 mm	13 mm	13 mm	13 mm

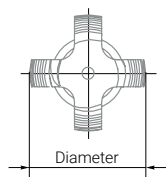
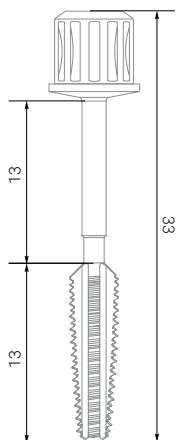


Bone taps for Progressive implants.
It is recommended to use them for I and II bone types.
For range ratchet.

MATERIAL Surgical steel

BONE TAPS FOR Bio3 ADVANCED IMPLANTS

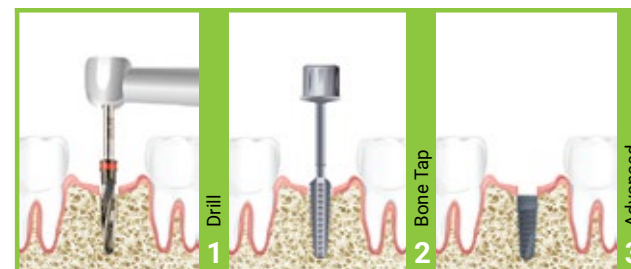
Bio3 Advanced



PRODUCT CODE



DIAMETER	3.3 mm	3.8 mm	4.2 mm	5.0 mm
LENGTH	13 mm	13 mm	13 mm	13 mm



Bone taps for Advanced implants.
It is recommended to use them for I and II bone types.
For range ratchet.

MATERIAL Surgical steel

Bio3 IMPLANTS

Premium Dental Implants



SPECIAL PROPOSAL

FOR DOCTOR **Bio3 BONE, Bio3 PENGUIN**
FOR PATIENT **Bio3 VITAMIN, Bio3 IMPLANT CARE FOAM**

MATERIAL FOR BONE REGENERATION **Bio3 BONE**

MATERIAL FOR BONE REGENERATION



NATURAL OSTEOPLASTIC MATERIAL MADE OF HIGHLY PURIFIED BULL BONE

Bio3 BONE 500-1000 – possesses osteogenic properties and high biological compatibility with strongly marked hydrophilic properties. Due to a three-dimensional porous structure of hydroxiapatite of biological origin (of trabecular and diaphysial tubular bone parts) it promotes angiogenesis, bone marrow stem cell migration as well as fast penetration of blood proteins into micropores which, in their turn, are temporary reservoirs for proteins assembly that precipitate their growth.

The natural osteoplastic material is made of highly purified bull bone.

Bio3 BONE is a safe, according to BSE, transplantation material from Germany which has no cell elements and protein at all. For Bio3 BONE production a technology of gradual multi-level cleaning of spongy and cortical bone tissue CTS is used together with high-temperature processing method. These production processes permit to remove all organic components from the material and exclude any potential immune reactions onset.

BULL BONE

DBL05.	Bio3 Bone 500- 1000 0.5
DBL10	Bio3 Bone 500- 1000 1.0
DBL20	Bio3 Bone 500- 1000 2.0
DBL50	Bio3 Bone 500- 1000 5.0

IS A SYNTHETIC BONE GRAFT SUBSTITUTE WITH IMPROVED RESORBABILITY (SYNTHETICS BONE GRAFT)

Bio3 BETA BONE 500-1000 – it is a safe and secure material. Beta Bone homogeneous structure helps to form new bone tissue and ensures its long-term mechanical stability.

High osteoconductivity of Bio3 Beta Bone is achieved due to high porosity (80%) with a pore size of 200 to 800 µm and their interconnected structure. The high microporosity of Bio3 Beta Bone is an ideal framework for accelerating the growth of osteogenic cells and it optimally promotes the regeneration of bone tissue. This material is not less effective than materials derived from bovine bone. It is easy to use and it has good resorbability, retains volume and mechanical stability. Resorption process and material integration has 2 phases: during 3-6 months there is beta-tricalcium phosphate regeneration, and then hydroxyapatite integration.

SYNTHETICS BONE GRAFT

BB51005	Bio3 Bone Beta 500- 1000 0.5
BB51010	Bio3 Bone Beta 500- 1000 1.0
BB51020	Bio3 Bone Beta 500- 1000 2.0
BB51050	Bio3 Bone Beta 500- 1000 5.0

Bio3 PENGUIN MONITOR OSSEOINTEGRATION



The RFA Technique

Resonance Frequency Analysis (RFA) was introduced in implant dentistry more than 20 years ago. A peg attached to an implant is excited and the vibration frequency is picked up by the instrument and presented as an ISQ (Implant Stability Quotient) value.

Penguin^{RFA} — Removes Doubt

In today's implant dentistry, the trend is to use short or no healing periods before loading. This places high demands on the clinical team. If conditions are not optimal, poor primary stability may increase the risk of implant failure. PenguinRFA provides accurate and objective measurements of implant stability, serving as a reliable support when taking decisions when to load.



55002 Bio3

Mount the Multipeg™ onto the implant and the measurement is made in a second.

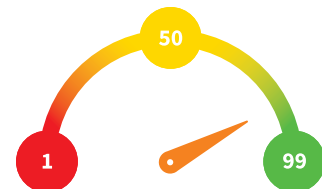
- ▶ Autoclavable 20 times
- ▶ ISQ Standard Calibrated™
- ▶ Optimal platform fit
- ▶ Laser marked with type number

55105 Bio3

Multipeg Driver Replacement Multipeg (different for various systems)

Monitor Osseointegration

- ▶ Reduce treatment time
- ▶ Manage risk patients
- ▶ For immediate and postponed loading



The ISQ scale is measured from 1 to 99 and correlates strongly to implant micro mobility. By taking a baseline value at implant placement and another before loading, the degree of osseointegration can be measured.



SPECIAL PROPOSAL FOR PATIENT

Bio3 VITAMIN COMPLEX

New and unique product by Bio3 Implants is a specially developed vitamin complex for better osseointegration

Bio3
FORMULA



BV



Pre Implant Complex. Power for oral solution.

Source of calcium, phosphorus, zinc, magnesium, copper, and vitamins K2 and D in optimal for uptake ratio. Calcium and phosphorus are two main microelements, which are responsible for mineralization, integrity, and density of bones and teeth. Magnesium takes part in metabolism of bone tissue, prevents from bone demineralization, and suppresses calcium deposit on the walls of blood vessels, heart valves, muscles, urinary tracts. Zinc is a cofactor of more than 200 enzymes and it acts upon the process of bone tissue remodelling. Copper takes part in building of the most important proteins of conjunctive tissue – collagen and elastin, which create a matrix of bone and cartilaginous tissue. Manganese normalizes synthesis of glycosaminoglycans, which are essential for formation of the bone and cartilaginous tissue. Vitamin D3 facilitates normal calcium uptake by organism and strengthening of muscle and bone tissues. Vitamin K2 plays an important role in the process of building of bones. Therefore, this complex of minerals and vitamins has a formulation that is similar to formulation of human bone tissue. Due to specially designed and balanced formulation it ensures fast osseointegration and bone tissue restoration after dental implantation.

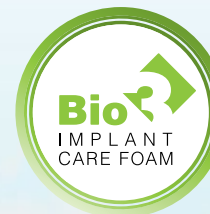
Regenera Complex. Capsules.

Source of collagen, glucosamine, propolis, chondroitin, hyaluronic acid and proline. It is a balanced combination of propolis and main components of organic matrix of bone tissue. Approximately 90% of organic matrix accounts for collagen. Along with mineral components collagen is the main factor determining mechanical properties of the bone. Distinction of bone tissue collagen is a large content of amino acid proline. In addition, the organic matrix contains glycosaminoglycans, chondroitin sulfate and hyaluronic acid. Such combination may be used to boost the immunity, for infection prophylaxis and improvement of wound healing process after dental implantation.

Post Implant Complex. Capsules.

Source of collagen, glucosamine, chondroitin, hyaluronic acid and proline. It is a complex of natural ingredients, which constitute the organic matrix of bone tissue in optimal ratio: collagen / glycosaminoglycans. Approximately 90% of organic matrix accounts for collagen. Along with mineral components collagen is a main factor determining mechanical properties of the bone. Distinction of bone tissue collagen is a large content of amino acid proline. In addition the organic matrix contains glycosaminoglycans, chondroitin sulfate and hyaluronic acid. Complex facilitates fast bone tissue restoration, it stimulates osseointegration process and improves short-term and long-term results of dental implantation.

Bio3 IMPLANT CARE FOAM



Bio3 Implants is a German globally known company that produces Premium class dental implants, as well as products for oral care after the implantation for our patients.

Bio3 Implants Research Institute is continuously working on new developments to offer our patients the best products and services in the field of dental implantology. For two years our experts have been conducting researches and as a result created a unique product for oral care after implantation – **Bio3 IMPLANT CARE FOAM**.

Recognized **Bio3 IMPLANT CARE FOAM** as the best care product in the world and strongly recommends it to the patients. The unique formula of **Bio3 IMPLANT CARE FOAM** accelerates gingival healing process, reduces the risk of edema and supports oral health after surgical implantation.

Studies have shown that in contrast to the use of other solutions, the use of Bio3 IMPLANT CARE FOAM during the first days after implantation shortens the bone-implant healing and prevents complications in the postoperative period. We do care about our patients' health and always offer only qualitative implants and care products for it.



Special proposal

Instruments

Kits

Suprastructures

Implants

Bio3 Implants Company



It is Natural